



AGENDA

CONVENE REGULAR MEETING.....6:00PM

Lake Coeur d’Alene Room, Edminster Student Union Building, 495 N College Dr, Coeur d’Alene

Zoom: <https://nic.zoom.us/j/85651579423>

CALL TO ORDER / VERIFICATION OF QUORUM Tarie Zimmerman

APPROVE AGENDA Tarie Zimmerman

PLEDGE OF ALLEGIANCE Tarie Zimmerman

MESSAGE FROM BOARD CHAIR..... Tarie Zimmerman

PUBLIC COMMENT Tarie Zimmerman

The NIC Board of Trustees welcomes public comment on agenda items from in-person attendees, and commenters will be limited to two minutes per individual. Remarks are subject to NIC Policy 2.01.03. Individuals interested in providing public comment outside of the meeting may email board@nic.edu.

CELEBRATING SUCCESS: UIF Global Summit.....Nick Swayne, PhD / Marita Diffenbaugh / Colby Mattila

CONSTITUENT REPORTS

- ASNIC Blake Sanchez
- Faculty Assembly Jon Gardunia, DPT
- Staff Assembly Dan Adams
- Senate Matt Petersen, PhD

PRESIDENT’S REPORT Nick Swayne, PhD

INFORMATION ITEMS

- Instruction: Health Professions & Nursing Nick Swayne / Angie Smith, EdD
- Spring Athletics Nick Swayne, PhD / Shawn Noël
- Dual Credit Nick Swayne, PhD / Holly Edwards / Andy Ruppel

CONSENT AGENDA Tarie Zimmerman

- Action ([Tab 1](#)): Approve Board Regular Meeting Minutes for April 22, 2026

OLD BUSINESS

- Action ([Tab 2](#)): FY 2026-2027 Budget Nick Swayne, PhD / Sarah Garcia
- Information ([Tab 3](#)): Board Self-Assessment and President Evaluation Tarie Zimmerman

NEW BUSINESS

- Action: North Idaho College Outcome Focus Tarie Zimmerman

TRUSTEE REMARKS FOR THE GOOD OF THE ORDER

ADJOURN

Tab 1

BOARD OF TRUSTEES MEETING
May 27, 2026

TAB 1


CONSENT AGENDA: Approve Board of Trustees Meeting Minutes for April 22, 2026

BACKGROUND: Tab 1 includes the Board Meeting Minutes with Addenda for April 22, 2026

SUGGESTED MOTION FOR BOARD ACTION

It is requested that a Board Member make the motion to approve the Board of Trustees Meeting Minutes for April 22, 2026 as presented.

Prepared by: Suzy Scura
Board Clerk

 **North Idaho College**
BOARD OF TRUSTEES MEETING
Edminster Student Union Building
April 22, 2026
MINUTES

CALL TO ORDER

Chair Tarie Zimmerman called the meeting to order at 6:01 p.m. and verified that a quorum was present.

ATTENDANCE

Trustees: Rick Durbin
Mary Havercroft
Eve Knudtsen
Tarie Zimmerman

Also present: Nick Swayne, President

APPROVE AGENDA

Chair Zimmerman called for a motion to approve the agenda as presented. Trustee Mary Havercroft made the motion which was seconded by Trustee Eve Knudtsen. The Chair called for the vote. The motion passed unanimously with four votes in favor. Chair Zimmerman then led the Pledge of Allegiance.

MESSAGE FROM BOARD CHAIR

Chair Zimmerman conveyed Trustee Brad Corkill's regrets for his absence due to a previously scheduled vacation. She noted his interest in attending, particularly in light of the tenure-related agenda item, and said that he is expected to return for the May Board of Trustees meeting.

Chair Zimmerman thanked the community for its ongoing support of the College. She reported that NIC remains fully accredited, enrollment trends are increasing, and implementation of the strategic plan is progressing. Upcoming graduation ceremonies were noted as students prepare to enter the local workforce. In closing, the Chair again recognized the community for their support of the continued viability of the College.

PUBLIC COMMENT

There were no requests from the public to make comments.

APPROVE CONFERRAL OF TENURE

Interim Provost Dr. Lloyd Duman provided an overview of the tenure pathway, describing it as a four-year evaluative process. He then presented seven tenure candidates for Board consideration.

Chair Zimmerman called for a motion to approve conferral of tenure for the candidates presented. Trustee Knudtsen made the motion which was seconded by Trustee Rick Durbin. Following comments from Trustee Havercroft, the Chair called for the vote. The motion passed unanimously with four votes in favor.

CELEBRATING SUCCESS: PTK WINNERS

Amber Hasz, Assistant to the Dean and PTK Advisor reported on the Phi Theta Kappa (PTK) Honor Society and the program's 2026 award recipients. She recognized and highlighted the academic achievements of three NIC students who received PTK honors and scholarships.

Ms. Hasz also acknowledged Dean of Students Alex Harris; one of 21 college administrators chosen for the PTK Distinguished College Administrator award which honors administrators who work with students to strengthen campus communities. Ms. Hasz's presentation is included as an addendum to these minutes.

CONSTITUENT REPORTS

ASNIC

Student Senator Serena Hand reported on behalf of President Blake Sanchez, who was not present. Ms. Hand stated that in addition to regular business, ASNIC concluded its student government elections, the Student

Survival Guide is nearly finished, the constitution revision process is complete, and preparations for upcoming Arbor Day and Day of Service activities are underway.

Faculty Assembly

Chair Jon Gardunia, DPT reported that after vigorous debate, the Faculty Assembly has scheduled a special meeting to finalize discussions of Policy 3.02.34 (Teaching Focus). Three further policies will also be discussed.

Staff Assembly

Chair Dan Adams reported on recent activity including new staff introductions, preparation for upcoming Staff Assembly elections, commencement activity discussions, and a presentation from NIC's X-Labs.

Senate

Chair Matt Petersen, PhD reported that the senate is currently focused on replacing term limit senators and senators not seeking reelection. He provided a meeting timeline for the remainder of the semester and stated that four policies are expected to be finalized before the end of the academic year.

PRESIDENT'S REPORT

President Swayne reported on accreditation, activity related to strategic plan goals, and general updates.

Accreditation

Collaboration with the Northwest Commission on Colleges and Universities (NWCCU) will proceed as part of NIC's standard institutional processes rather than as special responses. The College remains accredited and is awaiting feedback on the recently submitted Policies, Regulations, and Financial Report (PERFR).

The NWCCU recently approved a name change to the program formerly known as Mechatronics. NIC may now begin advertising the program under its new name, Industrial Robotics.

Goal 1: Student Success and Access

Enrollment trends have stabilized following two years of record growth. Summer enrollment is currently up approximately 1%, compared to increases of approximately 16% in each of the past two years. Early indicators for fall show an increase of roughly 12%; however, this is expected to moderate to about 5%.

Goal 2: Academic Programs and Pathways

Coursedog scheduling software is expected to improve the College's ability to manage course scheduling. Due to implementation challenges, certain practices will be modified to align with the software's capabilities.

Goal 3: Community Partnerships and Engagement

Minimal final touches are nearing completion on the American Indian Student Center. A ribbon-cutting originally planned for May 2026 has been postponed. A student-focused opening event is also being planned.

President Swayne recently participated in the Natural Resources Curriculum Development Summit. The session centered on environmental science within American Indian Studies. It was noted that NIC had previously updated its curriculum to align American Indian Studies more closely with Environmental Science.

Goal 4: Institutional Systems and Integration

Efforts continue on aligning systems between the non-credit Workforce Training Center (WTC) and the credit-bearing side of the College. NIC is exploring new software solutions to support this integration.

Goal 5: Operational Excellence and Infrastructure

Facilities planning is underway following past Board discussions. The College is in the process of issuing a Request for Proposal (RFP), after which the planning process will proceed.

Budget and Finance

Cost-saving measures for fiscal year 2027 (FY27) include an early retirement incentive, consolidating Sandpoint operations, and partnering with local law enforcement for Idaho Peace Officers Standards and Training (P.O.S.T) Council academy training.

General Updates

Specific dates for May commencement and graduation ceremonies were announced.

President Swayne recently gave an update to the State Board of Education in Moscow, ID. In addition to four year institutions, two year institutions are now being invited to provide updates. This was NIC's first presentation.

The President was recently invited to visit with the Murdock Foundation, a private foundation supporting innovation, entrepreneurship, and scientific research.

The University of Idaho will soon host its first direct-entry master's degree nursing program on the NIC campus.

Additional recognitions included a Fulbright scholar visit from Romania, and Evangeline Collett, an NIC student who has composed the entire score for the College's production of the play "Eurydice", currently in production.

Three NIC students enjoyed success in recent state level entrepreneurship competitions.

INFORMATION ITEMS

Finance Report (Q3 Jan – Mar)

Sarah Garcia, Vice President for Finance and Business Affairs presented a finance update for FY26, January through March. Her presentation is included as an addendum to these minutes.

Spring Enrollment Report

Tami Haft, Dean of Enrollment Services provided an overview of spring 2026 enrollment statistics, highlighting consistent year-over-year headcount increases. Her presentation is included as an addendum to these minutes.

Legislative Affairs: Outcomes Recap

Tom Greene, Interim Chief Communications and Government Relations Officer presented a recap of the 2026 Idaho Legislative Session. His presentation is included as an addendum to these minutes.

CONSENT AGENDA

Tabs 1 and 2: Approve Board Meeting Minutes for March 25, 2026, and Approve FY 2026-2027 Board Regular Meeting Schedule

Chair Zimmerman requested a motion to approve the consent agenda as presented. Trustee Knudtsen made the motion which was seconded by Trustee Durbin. Chair Zimmerman called for the vote. The motion passed unanimously with four votes in favor.

NEW BUSINESS

Preliminary FY 2026-2027 Budget

Sarah Garcia provided a FY 2026-2027 budget preview. Her presentation is included as an addendum.

TRUSTEE REMARKS FOR THE GOOD OF THE ORDER

Trustee Havercroft said that she attended the Kootenai Technical Education Center (KTEC) board meeting earlier in the day. She reported that KTEC, with 650 students currently registered, recently underwent a state Career & Technical Education (CTE) review with positive results. Additionally, KTEC will soon host its annual H4: Hard Hats, Hammers, Healthcare, and Hot Dogs event, with approximately 600 attendees expected.

The meeting was adjourned at 7:26 p.m.

Respectfully Submitted,
Suzy Scura, Board Clerk

Addenda:

- 1) PTK Winners Presentation
- 2) Finance Report (Q3 Jan – Mar)
- 3) Spring Enrollment Report
- 4) Legislative Affairs Presentation
- 5) Preliminary FY26-27 Budget Presentation

North Idaho College Phi Theta Kappa Scholars

Joseph Moran: 2026 Coca-Cola Academic Team Scholar, \$1300 Scholarship

Tamara Hamming: 2026 New Century Workforce Pathway Scholar, \$1500 Scholarship

Claire Greenwood: 2026 New Century Transfer Pathway Scholar, \$2750 Scholarship
All-USA Academic Team, \$3000 scholarship



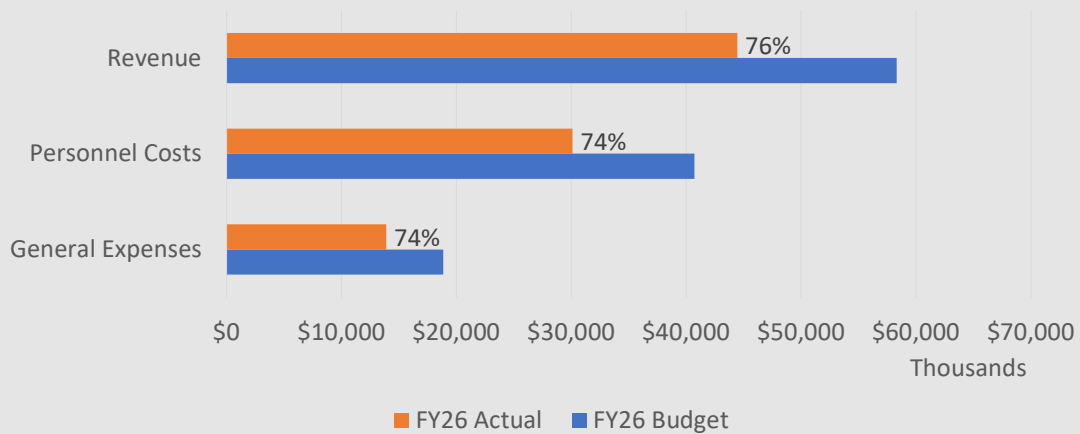


Finance Update Fiscal Year 2026 to Date

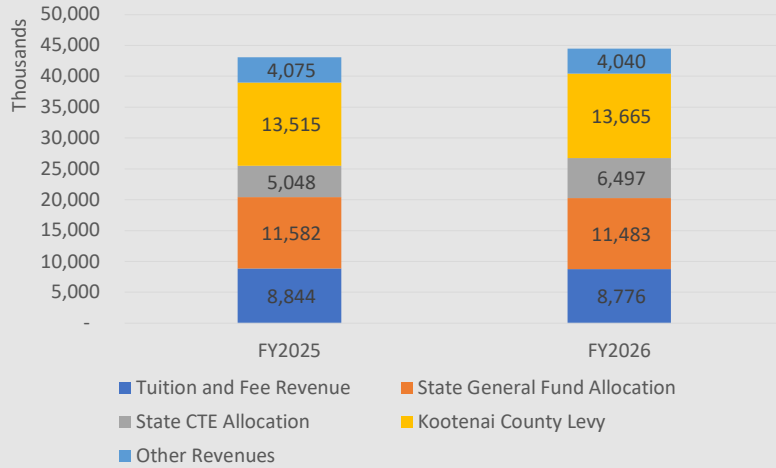
Recurring Report
April 2026

North
Idaho
College
► nic.edu

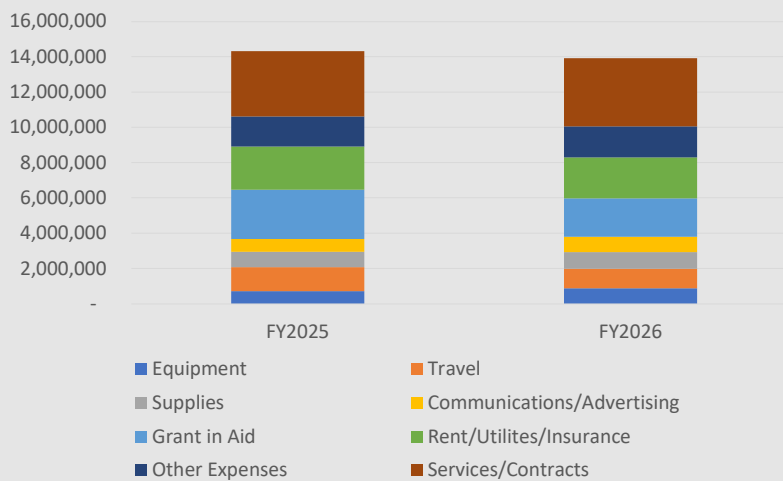
FY26 March Actual vs Budget



March Year To Date Revenue



March Year To Date Expenses





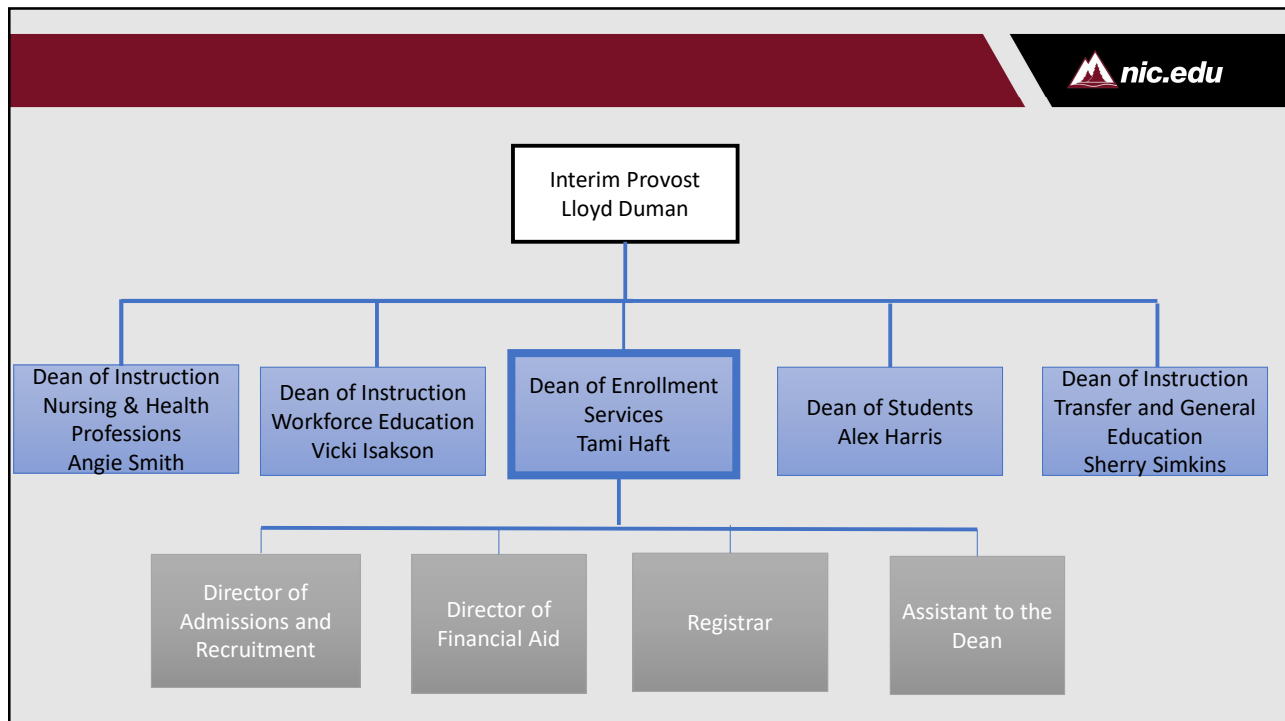
Enrollment Overview

Spring 2026 Enrollment

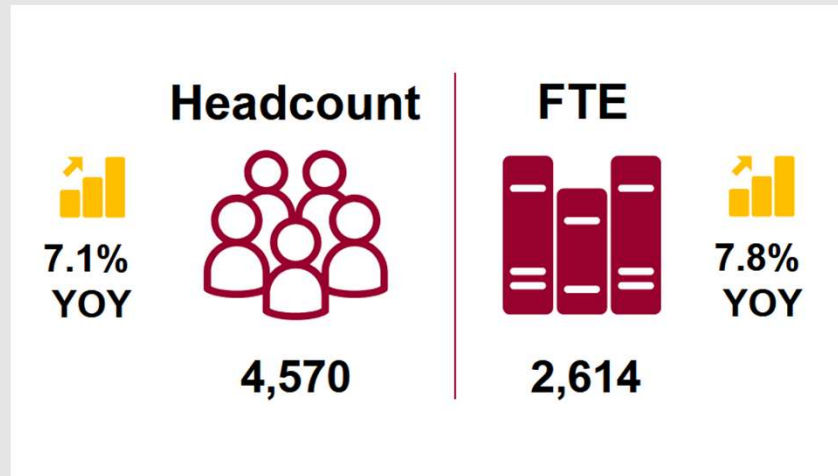
Dean of Enrollment Services

April 22, 2026

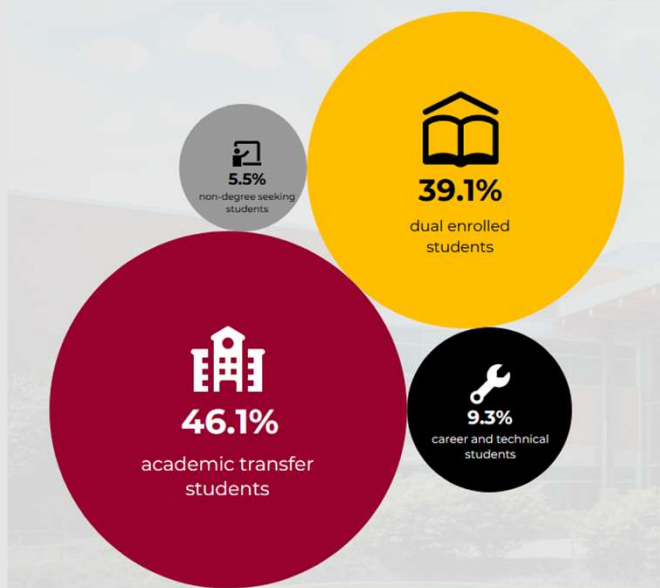
**North
Idaho
College**
► *nic.edu*

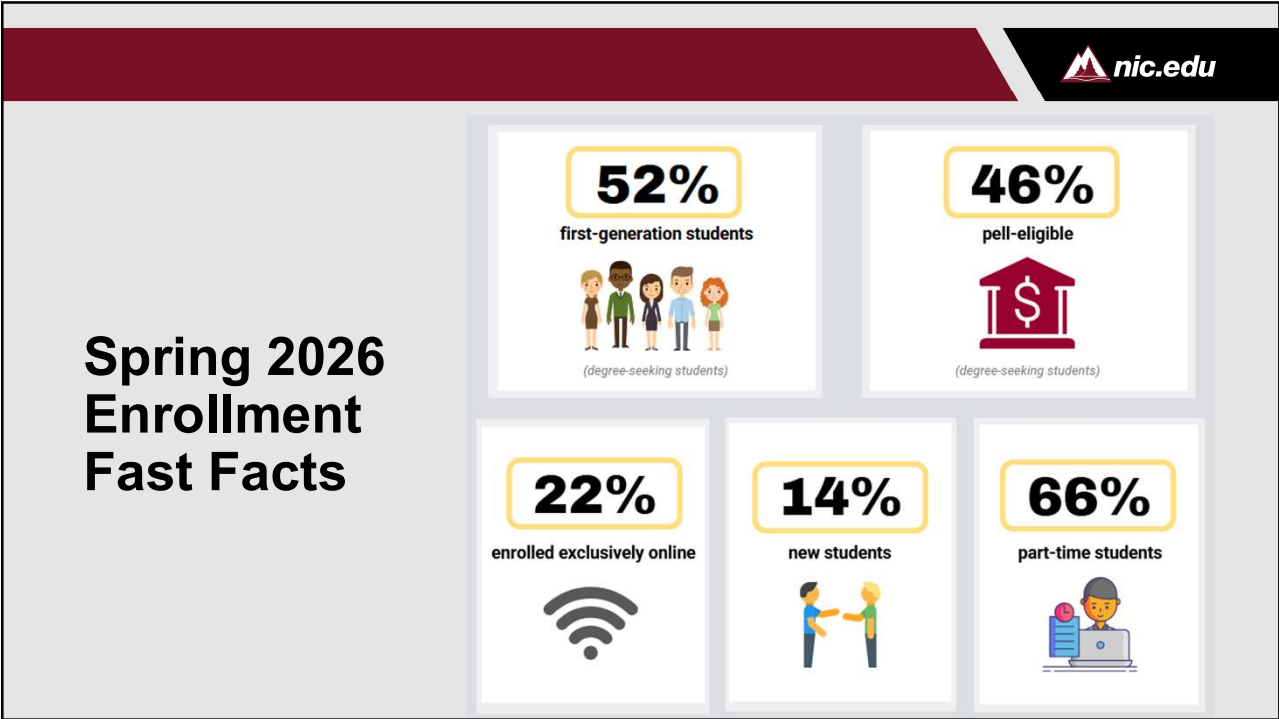
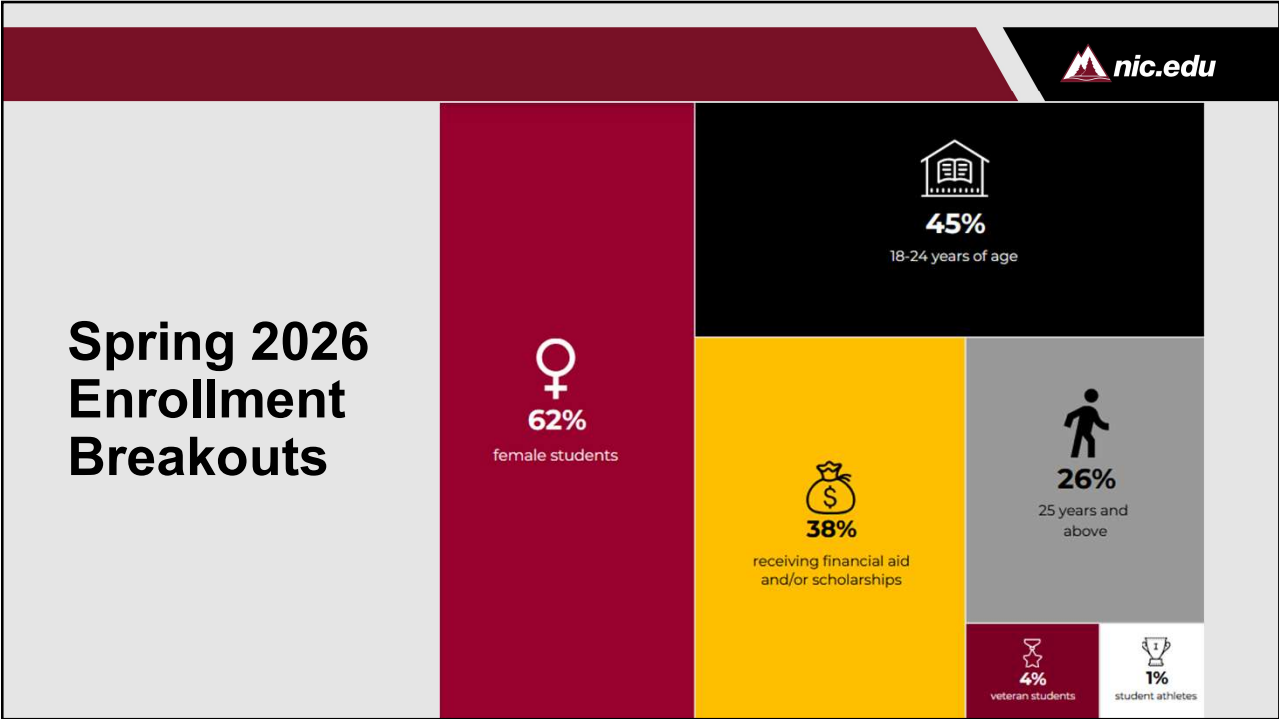


Spring 2026 Enrollment Snapshot



Spring 2026 Enrollment Buckets





Regional Enrollment



91%
Idaho resident

88%
Region I resident

73%
Kootenai County resident



17%

current dual high school seniors have applied to graduate with a degree or certificate this spring



1,785
dual enrolled students



41%
are male



6.98
average credits per student



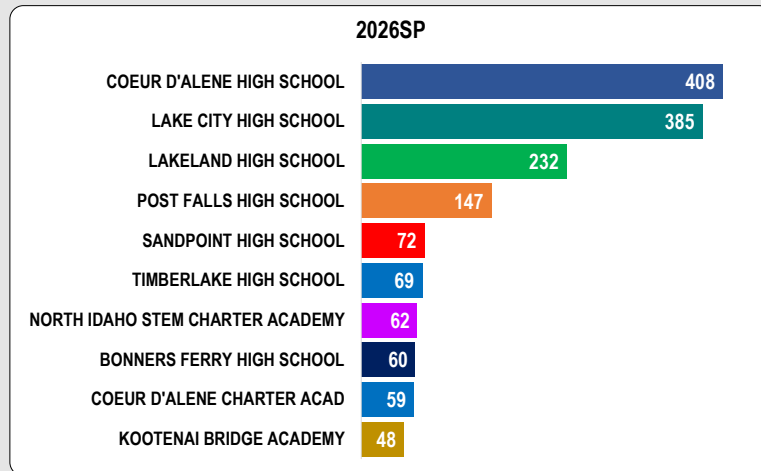
65% are taking one or more courses at a high school location



20%
attending full-time

Spring 2026 Dual Enrollment Highlights

Top 10 Feeder High Schools Dual Enrollment Students

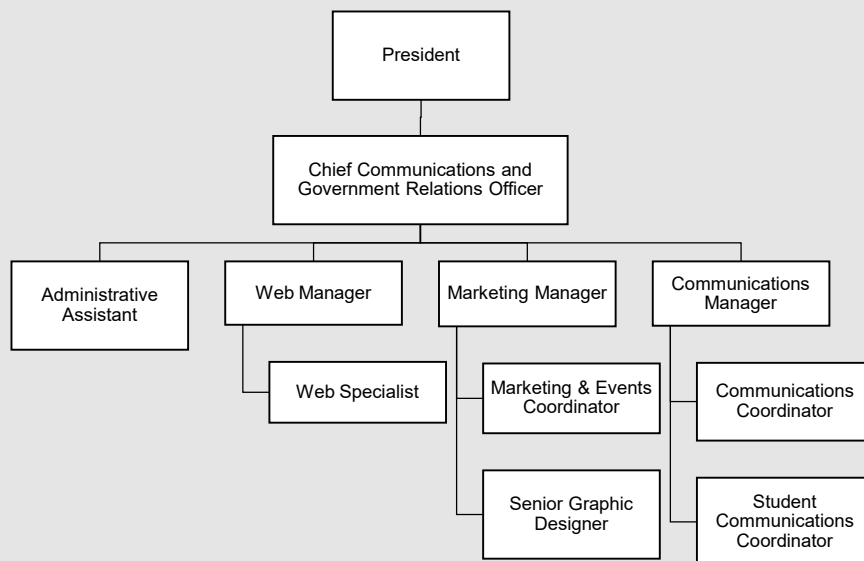




2026 Legislative Recap

Tom Greene
Interim Chief Communications and Government
Relations Officer

**North
Idaho
College**
► *nic.edu*



2026 Idaho Legislative Session

- Early proposed cuts for all higher education
- Modest recovery in funding for community colleges after early reductions
- Not a growth year, but stabilization

Challenges Ahead

- Ongoing base budget pressure
- Higher education remains a target in tight budgets
- Expect continued constrained funding

Bottom Line

Community colleges avoided deeper cuts and saw modest gains, but NIC enters a continued tight funding environment requiring careful planning.

Successes at Federal Level

- NIC elevating its voice on the national stage through federal advocacy
- Direct engagement with Idaho's delegation driving real outcomes
- Workforce Pell expansion advancing access to short-term career training
- Federal relationships translating into support for NIC funding opportunities

What's Next?

- Continue strong advocacy for community college funding in Idaho
- Capitalize on federal policy changes to expand student access and workforce programs
- Strengthen relationships with state and federal policymakers to advance NIC priorities and funding opportunities



FY2026-2027 Budget Preview

North
Idaho
College
▶ nic.edu



nic.edu

Principles and Assumptions

- Invest in recruitment and retention efforts
- Strategically allocate resources to college priorities
- Incremental increase in tuition rates
- Step plus 1% compensation increase for full-time employees

Revenue - Tuition and Fees

- Recommend \$5 per credit increase
 - Comparable with the other community colleges
 - Estimated revenue generation \$306,986 based on FY26 enrollment
- Recommend budget for flat enrollment level

Revenue - State Funding



Revenue - State Funding

- General Allocation

• 3% Reduction from FY26 carried forward to FY27	\$ (485,500.00)
• Funding for increased benefit costs	\$ 324,400.00
• Transfer funds to State Board for Learning Mgmt. Software	\$ (46,200.00)
	\$ (207,300.00)

Revenue - State Funding

- Career Technical Education

- 3% Reduction in FY26
- Funding for increased benefit costs
- Final allocation not yet provided
- Will adjust expense budgets within CTE to match revenue

Revenue - Property Taxes

- Recommending increase for new construction only
 - \$250,000
- Levy Increases would be \$182,000 per 1%
 - 1% - \$182,000
 - 2% - \$364,000
 - 3% - \$546,000

Total Changes in Revenue

Tuition and Fees	\$ 306,986.00
State General Funds	\$ (207,300.00)
State Career Technical Funds	\$ -
Property Tax	\$ 250,000.00
Change in Revenue	\$ 349,686.00

Expenses - Increases

New Expenses Added to FY27 Base Budget	Amount	Strategic Plan Goal(s)
Compensation Increase for Full-Time Employees	\$ 880,865.00	5
Increase in medical premiums	\$ 475,031.00	5
License fee for Course Dog and Element 451 software	\$ 300,000.00	1, 2, 5
Reclassification of 12 employees	\$ 95,000.00	5
Funding for 2 full-time faculty	\$ 160,000.00	2
Allocation of funding to successful recruitment and retention activities	\$ 75,000.00	1
Retain Strategic Initiative Fund	\$ 200,000.00	1,2,3,4,5
Cover inflationary increases for contracts and supplies	\$ 150,000.00	
Convert 3.5 temporary positions to permanent	\$ 200,000.00	2
	\$ 2,535,896.00	

Expenses - Reductions

- Salary savings from retiring employees
 - Reduction to midpoint of pay range
 - Not refilling selected positions
- Re-negotiation of contracts and leases
- Reduction of contingency funds
 - Accreditation-related costs

Summary

- Revenue budget increased by .59 percent
- Expense budget increase by 1 percent
 - Still unbalanced by \$230K
 - Leadership team worked to re-allocate existing resources to strategic and college priorities
 - President's Cabinet members worked through their teams to determine priorities and reallocate funds

Capital Investment Reserve

- Board authorized use of \$2.5M of Capital Reserve in FY26
 - Support for strategic plan goals 3, 4, and 5
 - Included space remodels, new furniture for American Indian Student Center, start of a Molstead Library remodel
 - Some projects still in progress
 - Request authorization to expend those funds into FY27
 - Anticipate similar requests as current projects complete

Tab 2

BOARD OF TRUSTEES MEETING
May 27, 2026

TAB 2

OLD BUSINESS: Approve Fiscal Year (FY) 2026-2027 Budget

BACKGROUND: Tab 2 includes the FY 2026-2027 Budget (Trustee Preview) which was distributed to the Trustees prior to this Board meeting. A preliminary budget overview was presented at the April 22, 2026 regular Board of Trustees Meeting, and Trustees were offered the opportunity to meet individually with Sarah Garcia, Vice President of Finance and Business Affairs, following review of the materials. Included in the packet is a list of requested course fees by division and course number, which also requires board approval.

SUGGESTED MOTION FOR BOARD ACTION

It is requested that a Board Member make the motion to approve the FY 2026-2027 Budget and course fees as presented.

Prepared by: Suzy Scura
Board Clerk



North Idaho College

FY2027 Budget

**Presented to the Board of Trustees
May 27, 2026**

**General Fund
Proposed Operating Budget
FY 2027**

	<u>FY26 Budget</u>	<u>PROPOSED FY27 Changes</u>	<u>PROPOSED FY27 Budget</u>
Changes in Revenue			
Tuition and Fees	\$ 11,373,409		\$ 11,373,409
\$5 increase in per credit cost (all tuition)	-	\$ 306,986	\$ 306,986
Total Tuition	\$ 11,373,409	\$ 306,986	\$ 11,680,395
State General Funds	\$ 16,183,200		\$ 16,183,200
3% FY26 Ongoing Recision		(485,500)	\$ (485,500)
FY27 Change in Benefit Costs		324,400	\$ 324,400
Transfer of Canvas Learning Management fee to State Board of Education		(46,200)	\$ (46,200)
Total State General Fund Allocation	\$ 16,183,200	\$ (207,300)	\$ 15,975,900
CTE Funding	\$ 8,662,740		\$ 8,412,103
CTE FY26 Recision		(334,000)	
CTE Funding Change	-	83,363	
Total State Career Technical Education Allocation	\$ 8,662,740	\$ (250,637)	\$ 8,412,103
State Liquor Tax	\$ 200,000		\$ 200,000
Property Tax	\$ 18,220,607		\$ 18,220,607
New Property on Rolls (estimate)		250,000	\$ 250,000
Total Property Tax Levy	\$ 18,220,607	\$ 250,000	\$ 18,470,607
Interest Income	\$ 800,000		\$ 800,000
All other Revenue			
County Tuition Payments	\$ 514,520		\$ 514,520
Miscellaneous Tax Receipts	\$ 1,000,000		\$ 1,000,000
Revenue sharing from other funds	\$ 250,000		\$ 250,000
Estimated Salary Salvage	\$ 296,720		\$ 296,720
Fund Balance Transfer	\$ 1,268,652		\$ 1,268,652
Other Revenue	\$ 197,850		\$ 197,850
FY27 Revenue Projection	\$ 58,967,698	\$ 99,049	\$ 59,066,747
Percentage Change			0.17%
			\$ 99,049

**North Idaho College
General Fund
Proposed Operating Budget
FY 2027**

	FY26 Budget	FY27 Proposed Budget
Revenue		
Tuition and Fees	\$ 11,373,409	\$ 11,680,395
State General Fund Allocation	16,183,200	15,975,900
State Liquor Tax Allocation	200,000	200,000
State CTE Allocation	8,662,740	8,412,103
Property Taxes	18,220,607	18,470,607
Other Revenue		
County Tuition Payments	514,520	514,520
Miscellaneous Tax Receipts	1,000,000	1,000,000
Revenue sharing from other funds	250,000	250,000
Estimated Salary Salvage	296,720	296,720
Fund Balance Transfer	1,268,652	1,268,652
Other Revenue	997,850	997,850
Total Revenue	\$ 58,967,698	\$ 59,066,747
Operating Expenses		
Salary	\$ 28,933,143	\$ 29,159,288
Benefits	9,752,220	10,274,472
Equipment Inventory	70,884	96,900
General Expenses	20,201,751	19,536,087
Total Expenditures	\$ 58,957,998	\$ 59,066,747

Personnel Costs are approximately 65.6% of the total budget in FY26 and 66% in FY27

**North Idaho College
General Fund
FY 2027**

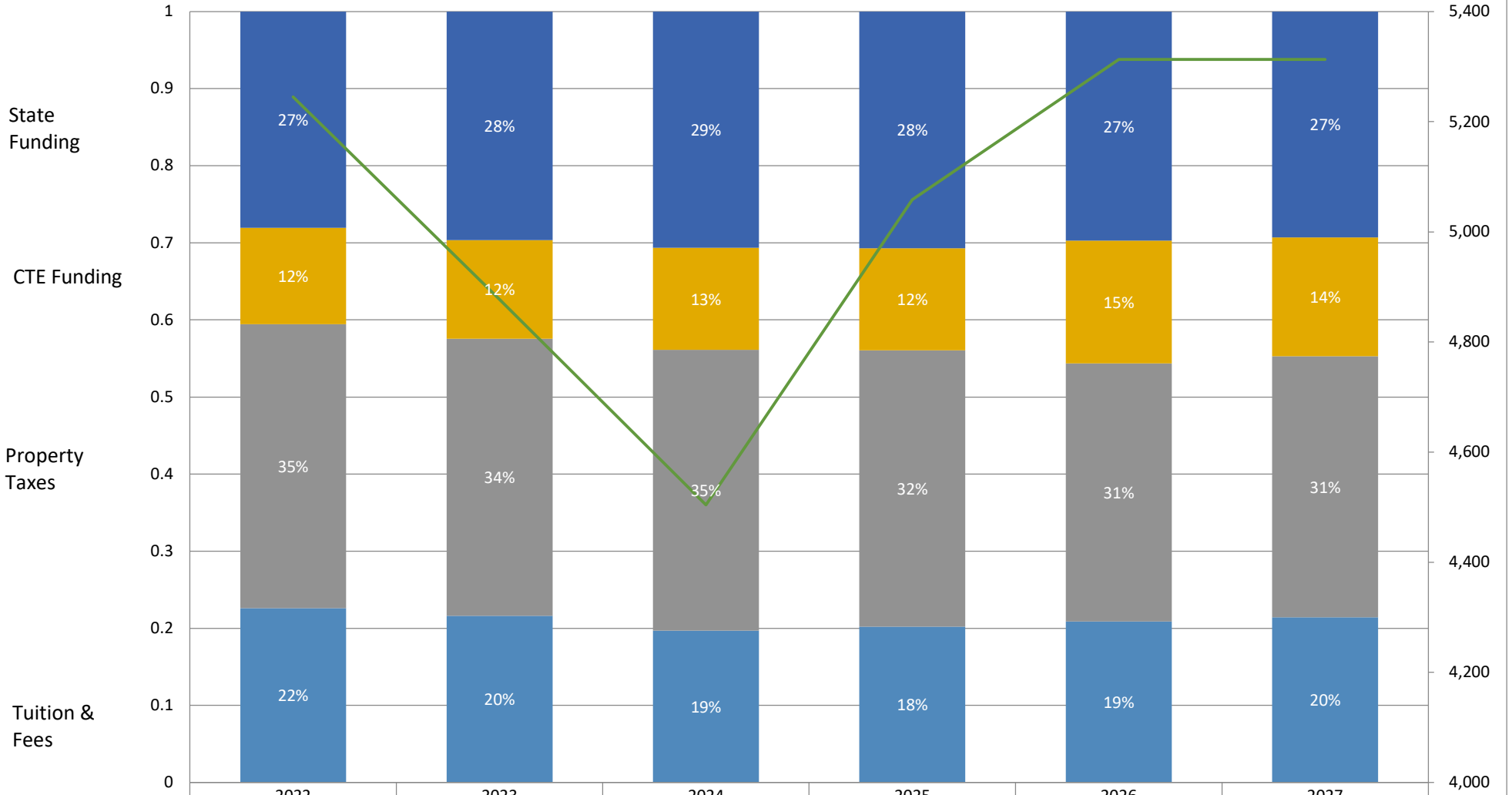
New Expenses Added to FY27 Budget

<u>Description</u>	<u>Budget Amount</u>	<u>Strategic Plan Goal</u>
<i>Compensation Increase for Full-Time Employees</i>	\$ 880,865	5
<i>Increase in medical premiums</i>	\$ 475,031	5
<i>License fee for Course Dog and Element 451 Software</i>	\$ 300,000	1,2,5
<i>Reclassification of 12 employees</i>	\$ 95,000	5
<i>Funding for 2 full-time faculty</i>	\$ 160,000	2
<i>Allocation of funding to successful recruitment and retention activities</i>	\$ 75,000	1
<i>Cover inflationary increases for contracts and supplies</i>	\$ 150,000	
<i>Convert 3.5 temporary positions to permanent</i>	\$ 200,000	2
	<u>\$ 2,335,896</u>	

Expense Reductions

- Reduction to Grant in Aid Budget/Travel for Athletics*
- Reduction in NIHE spending*
- Reduction of Staff and Faculty Professional Development to Policy*
- Reduce Contingency for Accreditation Costs*
- Reduction in Adjunct Budgets*
- Reduction in Part Time Budgets*
- Salary savings from retirement*
- Savings from footprint reduction in Sandpoint*

Revenue and Enrollment History



	2022	2023	2024	2025	2026	2027
State Funding	13,170,600	14,566,100	14,982,400	15,442,300	16,183,200	15,975,900
CTE Funding	5,860,400	6,272,000	6,482,240	6,638,467	8,662,740	8,412,103
Property Taxes	17,299,145	17,659,145	17,820,607	18,020,607	18,220,607	18,470,607
Tuition & Fees	10,613,272	10,613,272	9,630,096	10,155,071	11,373,215	11,680,395
FTE (Credit Only)	5,245	4,878	4,504	5,059	5,313	5,313

**NORTH IDAHO COLLEGE
TUITION AND FEES PER SEMESTER
2026/2027 SCHOOL YEAR
Fiscal Year 2027**

	2025-2026	2026-2027	Difference	% Increase
<u>Total Tuition and Fees</u>				
In-District	<i>(\$152.00 per credit)</i>			
5 credits	\$ 735.00	\$ 760.00	\$ 25.00	3.40%
12 credits	\$ 1,764.00	\$ 1,824.00	\$ 60.00	3.40%
15 credits	\$ 2,205.00	\$ 2,280.00	\$ 75.00	3.40%
Out-of-District	<i>(\$176 per credit) *</i>			
5 credits	\$ 1,105.00	\$ 1,130.00	\$ 25.00	2.26%
12 credits	\$ 2,552.00	\$ 2,612.00	\$ 60.00	2.35%
15 credits	\$ 3,065.00	\$ 3,140.00	\$ 75.00	2.45%
Washington Residents	<i>(\$257 per credit)</i>			
5 credits	\$ 1,260.00	\$ 1,285.00	\$ 25.00	1.98%
12 credits	\$ 3,024.00	\$ 3,084.00	\$ 60.00	1.98%
15 credits	\$ 3,780.00	\$ 3,855.00	\$ 75.00	1.98%
WUE Residents	<i>(\$298 per credit)</i>			
5 credits	\$ 1,465.00	\$ 1,490.00	\$ 25.00	1.71%
12 credits	\$ 3,516.00	\$ 3,576.00	\$ 60.00	1.71%
15 credits	\$ 4,395.00	\$ 4,470.00	\$ 75.00	1.71%
Out of State/International	<i>(\$375 per credit)</i>			
5 credits	\$ 1,850.00	\$ 1,875.00	\$ 25.00	1.35%
12 credits	\$ 4,440.00	\$ 4,500.00	\$ 60.00	1.35%
15 credits	\$ 5,550.00	\$ 5,625.00	\$ 75.00	1.35%

*\$221.00 per credit for the first 10 credits, then \$171.00 for credits 11-18

Comparison of **Resident** Tuition & Fees Per Semester

Institution	Current	Estimated 2026/2027	Increase
CSI, Twin Falls (\$155/cr)	\$2,205	\$2,325	5.4%
NIC, Coeur d'Alene (\$152/cr)	\$2,205	\$2,280	3.4%
CWI, Nampa (\$172/cr)	\$2,340	\$2,580	10.3%
CEI, Idaho Falls (\$155/cr)	\$2,250	\$2,325	3.3%

Cost based on 15 credit hours.

**NORTH IDAHO COLLEGE
TUITION AND FEES PER CREDIT
2026/2027 SCHOOL YEAR
Fiscal Year 2027**

Per Credit Breakdown - First 12 Credits

	Tuition	Out of State/Out of District Tuition	General Fees	Commencement	Student Health	Athletics	Student Activities	ASNIC	DHC Bond Fee	Total
In District	112.00		13.50	0.33	2.83	3.00	3.17	2.33	15.00	152.00
Out Dist	112.00	24.00	13.50	0.33	2.83	3.00	3.17	2.33	15.00	176.00
Wash	112.00	105.00	13.50	0.33	2.83	3.00	3.17	2.33	15.00	257.00
WUE	112.00	146.00	13.50	0.33	2.83	3.00	3.17	2.33	15.00	298.00
Out State	112.00	223.00	13.50	0.33	2.83	3.00	3.17	2.33	15.00	375.00

DHC Bond fee supports operations of the Student Union Building, Student Wellness and Recreation Center, Residence Hall and associated bonds.

**North Idaho College
Proposed Plant Fund Budget FY2027**

	FY26 Budget	FY27 Proposed Budget
Total Funding:	\$ 4,263,902	\$ 4,054,002
Obligations:		
Rent	\$ 210,575	\$ 50,675
Instructional Equipment Replacement Fund	295,971	295,971
Computer Equipment Replacement	777,250	752,250
Capital Investment Reserve	2,588,111	2,588,111
Deferred Maintenance	231,900	231,900
Instructional Furniture Replacement	57,844	57,844
Administrative Furniture Replacement	27,251	27,251
Plant Fund Contingency	75,000	50,000
Net Plant Fund	\$ -	\$ -

**North Idaho College
Fee Based Activities
Proposed Budget FY2027**

	ASNIC	STUDENT HEALTH SERVICES	STUDENT ACTIVITIES AND RECREATION	ATHLETICS	COMMENCEMENT	TOTAL FEE BASED ACTIVITIES	FY26 BUDGET
TUITION & FEES REVENUE	\$ 110,343	\$ 140,340	\$ 157,200	\$ 147,403	\$ 16,365	\$ 571,651	\$ 593,880
SALES REVENUE	-					-	-
RENTAL REVENUE	-					-	-
OTHER REVENUE	-	38,353	42,714	2,293,937		2,375,004	2,825,570
TOTAL REVENUE	\$ 110,343	\$ 178,693	\$ 199,914	\$ 2,441,340	\$ 16,365	\$ 2,946,655	\$ 3,419,450
SALARY EXPENSE	\$ -	\$ 107,684	\$ 118,284	\$ 817,014		\$ 1,042,982	\$ 1,158,588
BENEFITS	-	52,458	50,350	323,080		425,888	480,427
MAJOR PROJECT	-	-	-	-		-	-
GENERAL EXPENSES	110,343	18,550	31,280	1,301,247	16,365	1,477,785	1,780,435
TOTAL OPERATING EXPENSES	\$ 110,343	\$ 178,692	\$ 199,914	\$ 2,441,341	\$ 16,365	\$ 2,946,655	\$ 3,419,450

North Idaho College
FY2027 Budget Proposal
(based on FY26 figures)
Grants

	AREA AGENCY ON AGING	HEAD START	OTHER GRANTS	FY27 BUDGET
FEDERAL REVENUE	\$ 2,557,082	\$ 4,178,150	\$ 1,225,422	\$ 7,960,654
STATE REVENUE	313,156		209,660	522,816
RENTAL REVENUE		12,000		12,000
OTHER REVENUE	15,000			15,000
TOTAL REVENUE	\$ 2,885,237	\$ 4,190,150	\$ 1,435,082	\$ 8,510,469
SALARY EXPENSE	\$ 987,961	\$ 2,348,864	\$ 795,987	\$ 4,132,812
BENEFITS	318,552	1,002,642	307,968	1,629,162
EQUIPMENT	-	-	108,204	108,204
OPERATING EXPENSES	1,578,725	838,644	222,923	2,640,292
TOTAL EXPENSES	\$ 2,885,237	\$ 4,190,150	\$ 1,435,082	\$ 8,510,469

*Other Grants Include: Adult Education, CTE Grants (CND/AdvOpp),
TRiO , INBRE and other grants*

**North Idaho College
Service Units
Proposed Budget FY2027**

	DHC OPERATIONS	WORKFORCE TRAINING	LAKESIDE CHILDREN'S CENTER	OTHER AUXILIARY SERVICES	FY27 BUDGET	FY26 BUDGET
FEDERAL REVENUE			\$ 30,000		\$ 30,000	\$ 25,000
RENTAL REVENUE				\$ 47,000	47,000	47,575
STUDENT FEE REVENUE	\$ 743,850				743,850	755,427
OTHER REVENUE*	2,825,094	\$ 4,562,024	208,469	138,000	7,733,587	6,115,301
FUND BALANCE TRANSFER	-				-	-
GENERAL FUND SUPPORT	-		490,000	350,000	840,000	765,564
TOTAL REVENUE	\$ 3,568,944	\$ 4,562,024	\$ 728,469	\$ 535,000	\$ 9,394,437	\$ 7,708,867
SALARY EXPENSE	\$ 749,961	\$ 2,540,977	\$ 460,170	\$ 288,484	\$ 4,039,592	\$ 3,137,094
BENEFITS	248,713	665,409	222,059	180,700	1,316,881	1,123,368
EQUIPMENT INVENTORY	-	-	-	-	-	223,445
GENERAL EXPENSES **	2,320,270	1,310,972	46,240	65,816	3,743,298	3,084,760
TOTAL OPERATING EXPENSES	\$ 3,318,944	\$ 4,517,358	\$ 728,469	\$ 535,000	\$ 9,099,771	\$ 7,568,667
NET INCOME	\$ 250,000	\$ 44,666	\$ (0)	\$ -	\$ 294,666	\$ 140,200

***DHC Operations include Bookstore Operations, Student Union Operations, Residence Hall, Food Service, and Student Wellness and Recreation
Other Auxiliary Services include Parking and Event Services.***

* For DHC Operations this figure is net of cost of goods sold.

** DHC Operations includes \$500K in debt service.

**North Idaho College
FY2027 Budget Proposal**

Total Institution

	General Fund	Fee Based	Services	Grants	FY27 BUDGET	FY26 BUDGET
TUTION AND FEE REVENUE	\$ 11,680,395	\$ 571,651	\$ 743,850		\$ 12,995,896	\$ 12,722,522
FEDERAL REVENUE			30,000	7,960,654	7,990,654	7,012,402
STATE REVENUE	\$ 24,588,003			522,816	25,110,819	25,887,582
LOCAL REVENUE	\$ 18,470,607				18,470,607	18,220,607
INTEREST INCOME	\$ 800,000				800,000	175,000
PURCHASE DISCOUNT	\$ 1,500				1,500	1,500
NET SALES REVENUE	\$ -	-	7,733,587		7,733,587	6,115,301
RENTAL REVENUE	\$ -	-	47,000	12,000	59,000	61,575
OTHER REVENUE	\$ 3,526,242	2,375,004	840,000	15,000	6,756,246	8,288,989
TOTAL REVENUE	\$ 59,066,747	\$ 2,946,655	\$ 9,394,437	\$ 8,510,469	\$ 79,918,308	\$ 78,485,478
SALARY EXPENSE	\$ 29,159,288	\$ 1,042,982	\$ 4,039,592	\$ 4,132,812	\$ 38,374,674	\$ 36,364,250
BENEFITS	\$ 10,274,472	425,888	1,316,881	1,629,162	13,646,403	12,809,009
EQUIPMENT	\$ 96,900	-	-	108,204	205,104	422,533
OPERATING EXPENSES	\$ 19,536,087	1,477,785	3,743,298	2,640,292	27,397,462	27,082,823
CTE CAPACITY BUILDING	\$ -					1,666,666
TOTAL EXPENSES	\$ 59,066,747	\$ 2,946,655	\$ 9,099,771	\$ 8,510,469	\$ 79,623,643	\$ 78,345,281
NET INCOME	\$ -	\$ -	\$ 294,666	\$ -	\$ 294,666	\$ 140,200

PROPOSED COURSE FEES FOR ACADEMIC YEAR 2026-2027

Career & Technical Professional Programs

Course	Description	FY26 Fee	FY27 Fee	Change
ACCT-140	QuickBooks Desktop	103.00	-	(103.00)
ACCT-242	Cost Accounting	38.00	-	(38.00)
BMGT-260	Human Resource Management	14.00	-	(14.00)
CAOT-204	Career Leadership	3.00	6.25	3.25
CAOT-210	Office Procedures	3.00	6.25	3.25
CAOT-220	Admin Support Internship I	90.00	94.00	4.00
CAOT-224	Medical Admin Assistant Intern	117.00	94.00	(23.00)
CAOT-226	Med Billing Spec Intern II	125.00	125.00	-
CITE-104	Systems Administration I	-	-	-
CITE-105	Systems Admin I Projects	50.00	-	(50.00)
CITE-116	Desktop OS Support	-	-	-
CITE-118	Computer IT Essentials	224.00	285.00	61.00
CITE-127	Desktop Commodity OS Projects	50.00	-	(50.00)
CITE-142	Information Sec Fundamentals	383.00	391.00	8.00
CITE-152	Networking Essentials	173.00	221.00	48.00
CITE-155	Linux Essentials	30.00	-	(30.00)
CITE-165	Linux System Admin	203.00	173.00	(30.00)
CITE-206	Systems Administration II	50.00	100.00	50.00
CITE-207	Systems Admin II Projects	185.00	-	(185.00)
CITE-208	Systems Administration III	135.00	149.00	14.00
CITE-209	Systems Admin III Projects	50.00	-	(50.00)
CITE-215	Network Support II Projects	-	-	-
CITE-217	Network Support III	300.00	325.00	25.00
CITE-243	Command Line and Script Fund	59.00	-	(59.00)
CITE-258	Cyber Operations	300.00	-	(300.00)
CITE-289	Cyber Competitions	35.00	35.00	-
CULA-120	Professional Kitchen I	425.00	450.00	25.00
CULA-222	Professional Kitchen 3	225.00	225.00	-
GDES-102	Survey of Graphic Design	60.00	50.00	(10.00)
GDES-131	Adobe Illustr - Vector Graphic	10.00	60.00	50.00
GDES-141	Web Design I	9.07	9.07	-
GDES-221	Graphic Design I	10.00	140.00	130.00
GDES-222	Graphic Design II	80.00	62.25	(17.75)
GDES-227	Digital Video & Comp Animation	80.00	34.00	(46.00)
GDES-252	Web Design III	57.07	57.07	-
GDES-283	Portfolio Development	78.00	160.00	82.00
LAWE-161	Basic Law & Patrol Orientation	800.00	870.00	70.00
LAWE-164	Detention & Law Orientation	710.00	855.00	145.00
PLEG-290	Paralegal Internship I	90.00	104.00	14.00
CULP-101	Culinary Fundamentals Lab	-	1,300.00	1,300.00
CULP-102	Baking and Pastry Fundamentals	-	350.00	350.00
CULP-103	Proteins and Modern Techniques	-	305.00	305.00
CULP-201	Adv Baking/Pastry/Int'l Cuisine I	-	305.00	305.00
CULP-202	Adv Baking/Pastry/Int'l Cuisine II	-	305.00	305.00
CULP-203	Culinary Apprenticeship Capstone	-	305.00	305.00

Communications & Fine Arts

Course	Description	FY26 Fee	FY27 Fee	Change
ART-100	Introduction to Art	-	-	-
ART-122	3-D/Design Foundation 1	19.00	68.00	49.00
ART-217	Life Drawing I	30.00	40.00	10.00
ART-218	Life Drawing II	30.00	40.00	10.00
ART-231	Beginning Painting I	11.00	18.00	7.00
ART-232	Beginning Painting II	11.00	18.00	7.00
ART-241	Sculpture I	35.00	100.00	65.00
ART-242	Sculpture II	35.00	100.00	65.00
ART-245	Intermediate Painting I	11.00	18.00	7.00
ART-246	Intermediate Painting II	11.00	18.00	7.00
ART-251	Printmaking I	30.00	100.00	70.00
ART-252	Printmaking II	30.00	100.00	70.00
ART-261	Ceramics I	77.00	77.00	-
ART-262	Ceramics II	76.00	76.00	-
INTR-250G	Teaching & Learning Outdoors	150.00	150.00	-
MUSA-114A	Voice	101.00	115.00	14.00
MUSA-114B	Piano	101.00	115.00	14.00
MUSA-114C	Jazz Piano	101.00	115.00	14.00
MUSA-114D	General Guitar	101.00	115.00	14.00
MUSA-114E	Classical Guitar	101.00	115.00	14.00
MUSA-114F	Flute	101.00	115.00	14.00
MUSA-114G	Oboe	101.00	115.00	14.00
MUSA-114H	Clarinet	101.00	115.00	14.00
MUSA-114I	Saxophone	101.00	115.00	14.00
MUSA-114K	Trumpet	101.00	115.00	14.00
MUSA-114L	Horn	101.00	115.00	14.00
MUSA-114M	Trombone	101.00	115.00	14.00
MUSA-114O	Tuba	101.00	115.00	14.00
MUSA-114P	Violin	101.00	115.00	14.00
MUSA-114Q	Viola	101.00	115.00	14.00
MUSA-114R	Cello	101.00	101.00	-
MUSA-114S	String Bass	101.00	115.00	14.00
MUSA-114T	Electric Bass	101.00	115.00	14.00
MUSA-114U	Percussion	101.00	115.00	14.00
MUSA-114V	Harp	101.00	115.00	14.00
MUSA-124A	Voice	101.00	115.00	14.00
MUSA-124B	Piano	101.00	115.00	14.00
MUSA-124C	Jazz Piano	101.00	115.00	14.00
MUSA-124D	General Guitar	101.00	115.00	14.00
MUSA-124E	Classical Guitar	101.00	115.00	14.00
MUSA-124F	Flute	101.00	115.00	14.00
MUSA-124G	Oboe	101.00	115.00	14.00
MUSA-124H	Clarinet	101.00	115.00	14.00
MUSA-124I	Saxophone	101.00	115.00	14.00
MUSA-124K	Trumpet	101.00	115.00	14.00
MUSA-124L	Horn	101.00	115.00	14.00
MUSA-124M	Trombone	101.00	115.00	14.00
MUSA-124O	Tuba	101.00	115.00	14.00
MUSA-124P	Violin	101.00	115.00	14.00

Communications & Fine Arts Continued

Course	Description	FY26 Fee	FY27 Fee	Change
MUSA-124Q	Viola	101.00	115.00	14.00
MUSA-124R	Cello	101.00	115.00	14.00
MUSA-124S	String Bass	101.00	115.00	14.00
MUSA-124T	Electric Bass	101.00	115.00	14.00
MUSA-124U	Percussion	101.00	115.00	14.00
MUSA-124V	Harp	101.00	115.00	14.00
MUSA-124Z	Composition	101.00	115.00	14.00
MUSI-100	Introduction to Music	-	-	-
MUSI-127	Survey of American Popular Music	-	-	-
PHTO-185	Adobe Photoshop and Lightroom	41.00	41.00	-
PHTO-288	Intermediate Digital Photography	22.00	22.00	-
PHTO-289	Photojournalism	-	-	-
THEA-102	Stage Makeup	163.00	185.00	22.00
THEA-114	Theatre Technology: Costume	79.00	90.00	11.00

English & Humanities

Course	Description	FY25 Fee	FY26 Fee	Change
WOCU-207	Murder Mysteries/Study Abroad	4,500.00	4,500.00	-
INTR-250E	Writing in the Wild	35.00	35.00	-
HUMS-101	Introduction to the Humanities	-	-	-

Health Professions

Course	Description	FY26 Fee	FY27 Fee	Change
DENT-100	Dental Hygiene Pre-Clinic	5,470.00	21.95	(5,448.05)
DENT-110	Dental Anatomy	267.00	64.00	(203.00)
DENT-120	Oral Radiography	267.00	630.00	363.00
DENT-150	Dental Hygiene Clinic I	-	467.00	467.00
DENT-200	Dental Hygiene Clinic II	603.00	2,809.00	2,206.00
DENT-230	Periodontology II	-	21.95	21.95
DENT-250	Dental Hygiene Clinic III	-	288.00	288.00
DENT-260	Dental Materials	298.00	328.55	30.55
DENT-270	Review/Ethics and Law	2,355.00	1,800.00	(555.00)
MAST-100	Phlebotomy	42.00	-	(42.00)
MAST-101	Clinical Skills for Med Asst I	-	21.95	21.95
MAST-102	Clinical Skills for Med Asst I	289.00	-	(289.00)
MAST-201	Clinical Skills Med. Assts. II	-	21.95	21.95
MAST-203	Clinical Skills Med. Assts. II	30.00	-	(30.00)
MAST-205	Administration of Medications	-	21.95	21.95
MAST-207	Administration of Medications	30.00	-	(30.00)
MAST-216	Medical Assistant Externship	-	21.95	21.95
MAST-290	Medical Assistant Externship	125.00	-	(125.00)
MLT-124	Medical Lab Fundamentals	657.00	765.00	108.00
MLT-218	Medical Lab Chemistry	-	21.95	21.95
MLT-224	MLT Student Lab Practice	684.00	835.00	151.00
MLT-226	Immunology and Lab Operations	-	21.95	21.95
MLT-250	Seminar and Exam Review	451.00	450.00	(1.00)
MLT-291	Internship I	-	21.95	21.95
MLT-292	Internship II	-	21.95	21.95
PTAE-107	Kinesiology	143.00	228.00	85.00

Health Professions Continued

Course	Description	FY26 Fee	FY27 Fee	Change
PTAE-110	Principles and Procedures	170.00	214.00	44.00
PTAE-204	Therapeutic Modalities	84.00	83.00	(1.00)
PTAE-207	Therapeutic Exercise	-	21.95	21.95
PTAE-208	Orthopedic Rehabilitation	40.00	46.82	6.82
PTAE-211	Data Collections	169.00	-	(169.00)
PTAE-215	Special Populations	40.00	58.10	18.10
PTAE-217	Neurological Rehabilitation	10.00	10.00	-
PTAE-240	Clinical Affiliation 1	280.00	365.00	85.00
PTAE-241	Clinical Affiliation 2	-	21.95	21.95
RADT-111L	Introduction to Radiology Lab	194.00	479.00	285.00
RADT-112L	Radiographic Procedures I Lab	60.00	240.00	180.00
RADT-113L	Prin Radiation Bio & Prtct Lab	40.00	40.00	-
RADT-116	Clinical Radiography I	260.00	80.00	(180.00)
RADT-118	Radiographic Procedures III	50.00	100.00	50.00
RADT-119	Clinical Radiography III	60.00	60.00	-
RADT-211L	Radiographic Imaging Lab	60.00	60.00	-
RADT-220	Clinical Radiography III	100.00	130.00	30.00
RADT-221	Clinical Radiography IV	60.00	60.00	-
RADT-222	Radiologic Technology Review	225.00	225.00	-
SURG-105	Care of the Surgical Patient	-	21.95	21.95
SURG-120	Fundamentals of ST I	877.00	938.00	61.00
SURG-121	Fundamentals of ST II	195.00	21.95	(173.05)
SURG-140	Clinical Experience I	247.00	56.50	(190.50)
SURG-141	Clinical Experience II	-	21.95	21.95
SURG-150	CST Exam Review/Leadership	40.00	260.50	220.50

Math, Computer Science & Engineering

Course	Description	FY26 Fee	FY27 Fee	Change
ENGR-119	Engineering/CS FYE Seminar	-	12.00	12.00
ENGR-123	Introduction to Engineering	10.00	10.00	(0.00)
ENGR-223	Engineering Analysis	25.00	30.00	5.00
ENGR-240L	Circuits I Lab	10.00	10.00	-
ENGR-241L	Elect Circuits II Lab	10.00	10.00	-

Natural Sciences

Course	Description	FY25 Fee	FY26 Fee	Change
BACT-250L	General Microbiology Lab	160.00	155.00	(5.00)
BIOL-100L	Concepts of Biology Lab	51.00	44.00	(7.00)
BIOL-115L	Intro Life Sciences Lab	48.00	43.00	(5.00)
BIOL-170L	Introductory Foods Lab	-	-	-
BIOL-175L	Human Biology Lab	62.00	50.00	(12.00)
BIOL-221L	Forest Ecology Lab	25.00	25.00	-
BIOL-227L	Human Anat & Phys I Lab	54.00	44.00	(10.00)
BIOL-228L	Human Anat & Phys II Lab	67.00	93.00	26.00
BIOL-231L	Gen Ecol Lab	34.00	29.00	(5.00)
BIOL-260	Human Cadaver Prosection I	59.00	64.00	5.00
BIOL-261	Human Cadaver Prosection II	59.00	64.00	5.00
BTNY-203L	General Botany Lab	67.00	62.00	(5.00)
BTNY-241L	Systematic Botany	60.00	55.00	(5.00)
CHEM-100L	Concepts of Chemistry Lab	67.00	92.00	25.00

Natural Sciences Continued

Course	Description	FY25 Fee	FY26 Fee	Change
CHEM-101L	Introduction to Chemistry Lab	75.00	75.00	-
CHEM-102L	Essentials Organic/Biochem Lab	79.00	80.00	1.00
CHEM-111L	General Chemistry I Lab	93.00	101.00	8.00
CHEM-112L	Prin/Gen/Coll/Chem II Lab	92.00	98.00	6.00
CHEM-253L	Quan Analysis Lab	92.00	92.00	-
CHEM-278	Organic Chemistry I Lab	103.00	103.00	-
CHEM-288	Org Chem II Lab	103.00	103.00	-
ENSI-119L	Environmental Science Lab	40.00	35.00	(5.00)
GEOG-100L	Physical Geography Lab	24.00	19.00	(5.00)
GEOL-101L	Physical Geology Lab	32.00	27.00	(5.00)
GEOL-102L	Historical Geology Lab	37.00	32.00	(5.00)
GEOL-123L	Geol ID/PAC NW Lab	39.00	-	(39.00)
GEOL-255L	System Mineralogy Lab	47.00	42.00	(5.00)
PHYS-101L	Fund Phys Science Lab	16.00	11.00	(5.00)
PHYS-103L	Elem Astronomy Lab	14.00	9.00	(5.00)
PHYS-111L	General Physics I Lab	31.00	26.00	(5.00)
PHYS-112L	General Physics II Lab	37.00	32.00	(5.00)
PHYS-211L	Engineering Physics Lab I	33.00	28.00	(5.00)
PHYS-212L	Engineering Physics Lab II	40.00	35.00	(5.00)
ZOOL-202L	General Zoology Lab	49.00	44.00	(5.00)

Nursing

Course	Description	FY26 Fee	FY27 Fee	Change
NURS-196	LPN Transition	1,054.00	1,469.00	415.00
NURS-210	Fundamentals Lab	1,159.00	1,506.30	347.30
NURS-235	Psych-Mental Health Nursing	85.00	1,186.30	1,101.30
NURS-255	Medical Surgical Nursing Lab I	130.00	231.00	101.00
NURS-265	Medical Surgical Nursing Lab II	250.00	212.00	(38.00)
NURS-275	Transition to Practice Lab	112.00	156.00	44.00
PN-110L	Practical Nursing Lab 1	1,031.00	1,319.50	288.50
PN-111L	Practical Nursing Lab II	187.00	1,072.50	885.50
PN-112L	Practical Nursing Lab III	-	11.45	11.45
		4,008.00	7,164.05	3,156.05

Physical Education & Resort Recreation Management

Course	Description	FY26 Fee	FY27 Fee	Change
HOSP-111	Food Safety and Sanitation	40.00	21.95	(18.05)
HOSP-150	Food Service Sanitation & Safety	-	21.95	21.95
HOSP-235	Food Appreciation	90.00	21.95	(68.05)
PE-110A	Begin/Interm Swimming	-	-	-
PE-110B	Begin Whitewater Kayaking	50.00	50.00	-
PE-110C	Beginning Rock Climbing	60.00	60.00	-
PE-110D	Beginning Sailing	25.00	25.00	-
PE-110G	Equitation	150.00	150.00	-
PE-110L	Lake Kayak/Canoe	35.00	35.00	-
PE-110S	Swim Conditioning	-	-	-
PE-110U	Water Aerobics	-	-	-
PE-110VV	Introduction to CrossFit	-	-	-
PE-110W	Mountain Biking	497.00	497.00	-
PE-110Y	Bowling	65.00	68.00	3.00
PE-110Z	Beginning Fly Fishing	52.50	52.50	-

Physical Education & Resort Recreation Management Continued

Course	Description	FY26 Fee	FY27 Fee	Change
PE-111D	Racquetball	-	-	-
PE-111H	Whitewater Rafting	65.00	65.00	-
PE-111K	Rowing	-	-	-
PE-111O	Outdoor Adventures	35.00	35.00	-
PE-111P	Stand Up Paddle Boarding	35.00	35.00	-
PE-111S	Beginning Scuba Diver	-	-	-
PE-222	Wellness Lifestyles	-	-	-
PE-234	Team Dynamics	-	-	-
PE-237A	Wilderness Backpacking	136.00	136.00	-
PE-237B	Wilderness Survival	90.00	90.00	-
PE-237C	Whitewater Guiding	-	-	-
PE-237D	Mountaineering	-	-	-
PE-237E	Outdoor Programming/Leadership	-	-	-
PE-237F	Outdoor Navigation	-	-	-
PE-237G	Avalanche Level I	-	-	-
PE-237H	Intro to Outdoor Cooking	-	-	-
PE-237J	Swift Water Rescue	-	-	-
PE-248	Athletic Injuries-Sports Med	30.00	30.00	-
PE-259	Lifeguard Training	-	-	-
PE-288	First Aid	50.00	50.00	-
RRM-110	Wilderness First Responder	270.00	270.00	-
RRM-125	Wilderness Ethics & Interpretn	35.00	35.00	-
RRM-195	Backcountry Winter Skills	135.00	135.00	-
RRM-234	Team Dynamics	30.00	30.00	-
RRM-237A	Wilderness Backpacking	-	-	-
RRM-237B	Wilderness Survival	-	-	-
RRM-237C	Whitewater Guiding	125.00	125.00	-
RRM-237D	Mountaineering	150.00	150.00	-
RRM-237E	Outdoor Programming/Leadership	135.00	135.00	-
RRM-237F	Outdoor Navigation	25.00	25.00	-
RRM-237G	Avalanche Level I	135.00	135.00	-
RRM-237H	Intro to Outdoor Cooking	135.00	135.00	-
RRM-237J	Swift Water Rescue	135.00	135.00	-

Trades & Industries

Course	Description	FY26 Fee	FY27 Fee	Change
ACRR-165L	Collision Repair Lab I	110.00	152.80	42.80
ACRR-166L	Collision Repair Lab II	120.00	100.00	(20.00)
ACRR-175L	Collision Repair Lab III	120.00	138.24	18.24
ACRR-176L	Collision Repair Lab IV	120.00	100.00	(20.00)
AUTO-119L	Automotive Lab I	152.57	167.57	15.00
AUTO-129L	Automotive Lab II	165.43	202.35	36.92
AUTO-235L	Advanced Automotive Lab III	142.57	160.37	17.80
AUTO-245L	Advanced Automotive Lab IV	218.10	235.90	17.80
AUTO-246L	0	218.10	235.90	17.80
CARP-141	Intro to Carpentry & Construct	-	-	-
CARP-142	Safe and Savvy Tool Use	-	-	-
CARP-165L	Res. Construction Lab I	-	-	-
CARP-170L	Res. Construction Lab II	-	-	-
DSLTL-117L	Diesel Lab	80.93	80.93	-

Trades & Industries Continued

Course	Description	FY26 Fee	FY27 Fee	Change
DSLT-123L	Diesel Engine Elec Systems Lab	125.26	162.86	37.60
DSLT-124L	Powertrain/Brake Systems Lab	25.20	57.36	32.16
DSLT-223L	Adv Tune-Up/Comptr Engines Lab	60.00	82.60	22.60
DSLT-224L	Undercarriage/Powershift Lab	54.26	67.30	13.04
HVAC-161L	HVACR Lab I	182.00	182.00	-
HVAC-171L	HVACR Lab II	391.00	391.00	-
MACH-151L	Machining Tech Lab I	110.00	2,110.00	2,000.00
MACH-152L	Machining Tech Lab II	70.00	70.00	-
MACH-231	Computers in Machining	-	-	-
MACH-253L	Adv Machining Lab I	200.00	200.00	-
MACH-254L	Adv Machining Lab II	160.00	160.00	-
MDET-110	Intro to SolidWorks	50.00	50.00	-
MDET-151L	Machining Lab	-	110.00	110.00
MDET-215	Industrial Process	25.00	50.00	25.00
MDET-230	Advanced Mechanical Design	175.00	175.00	-
IRAA-100	AC/DC Electrical Concepts	-	100.00	100.00
0	0	-	-	-
MM-151L	Industrial Mechanics Lab I	212.80	212.80	-
MM-152L	Industrial Mechanics Lab II	144.00	144.00	-
WELD-140	0	-	-	-
WELD-182L	Welding Lab II	500.00	500.00	-
WELD-188L	Advanced SMAW Pratical	500.00	500.00	-
WELD-197L	Oxy/Fuel Cutting Lab	100.00	100.00	-
WELD-281L	Shielded Metal Arc Welding	400.00	400.00	-
WELD-291L	Gas Tungsten Arc Welding Lab	400.00	400.00	-
WWTR-150L	Wasterwater Treatment Lab I	48.50	-	(48.50)
WWTR-152L	Wasterwater Treatment Lab II	48.50	-	(48.50)
WWTR-210L	Wasterwater Treatment Lab III	100.00	-	(100.00)

Tab 3

BOARD OF TRUSTEES MEETING
May 27, 2026

TAB 3

OLD BUSINESS: Board Self-Assessment and President Evaluation

BACKGROUND: As stated in policy 2.01.08 (Board Self-Evaluation and Goals), “The Board of Trustees of North Idaho College is committed to effective governance through ongoing assessment of its own performance and continuous improvement. The Board recognizes that purposeful self-evaluation models are best practices in leadership and reinforces its accountability to the institution and the communities it serves.”

Additional, as stated in policy 2.02.02 (Presidential Performance Review), “The Board of Trustees recognizes the importance of having exceptional executive leadership and that such leadership is dependent upon constructive review of how that responsibility is exercised. To further this end, the Board of Trustees will annually review the President’s stewardship in order to strengthen his or her performance, to enable the President and the Board of trustees to reset mutually agreed upon goals, and to inform annual decisions on compensation and other terms of employment.”

STATUS: The Association of Community College Trustees (ACCT) has been retained to assist the NIC Board of Trustees with its 2026 Board self-assessment and presidential evaluation processes.

Following these parameters established in policy 2.01.08 (Board Self-Evaluation and Goals) and policy 2.02.02 (Presidential Performance Review), a timeline for the two activities is outlined below.

Date	Activity
By 5/27	NIC Board and President approve presidential evaluation survey and process. NIC Board and President initiate board self-assessment survey and process.
By 6/24	Board members are alerted by chair or liaison to watch for an email from Colleen Allen at ACCT that will include links to BOTH surveys.
By 6/25	ACCT receives preferred email addresses of each trustee.
On or about 6/25	ACCT launches surveys.
By 7/19	Portals close/data collection ends.
7/20-27	ACCT prepares summary analysis of both surveys.
8/10	ACCT sends summary reports to president’s office for the board chair.
8/26	Summer board retreat facilitated by Debbie DiThomas and Ken Burke. Board conducts president’s evaluation in close session and reviews results of board self-assessment.

Prepared by: Suzy Scura
Board Clerk