

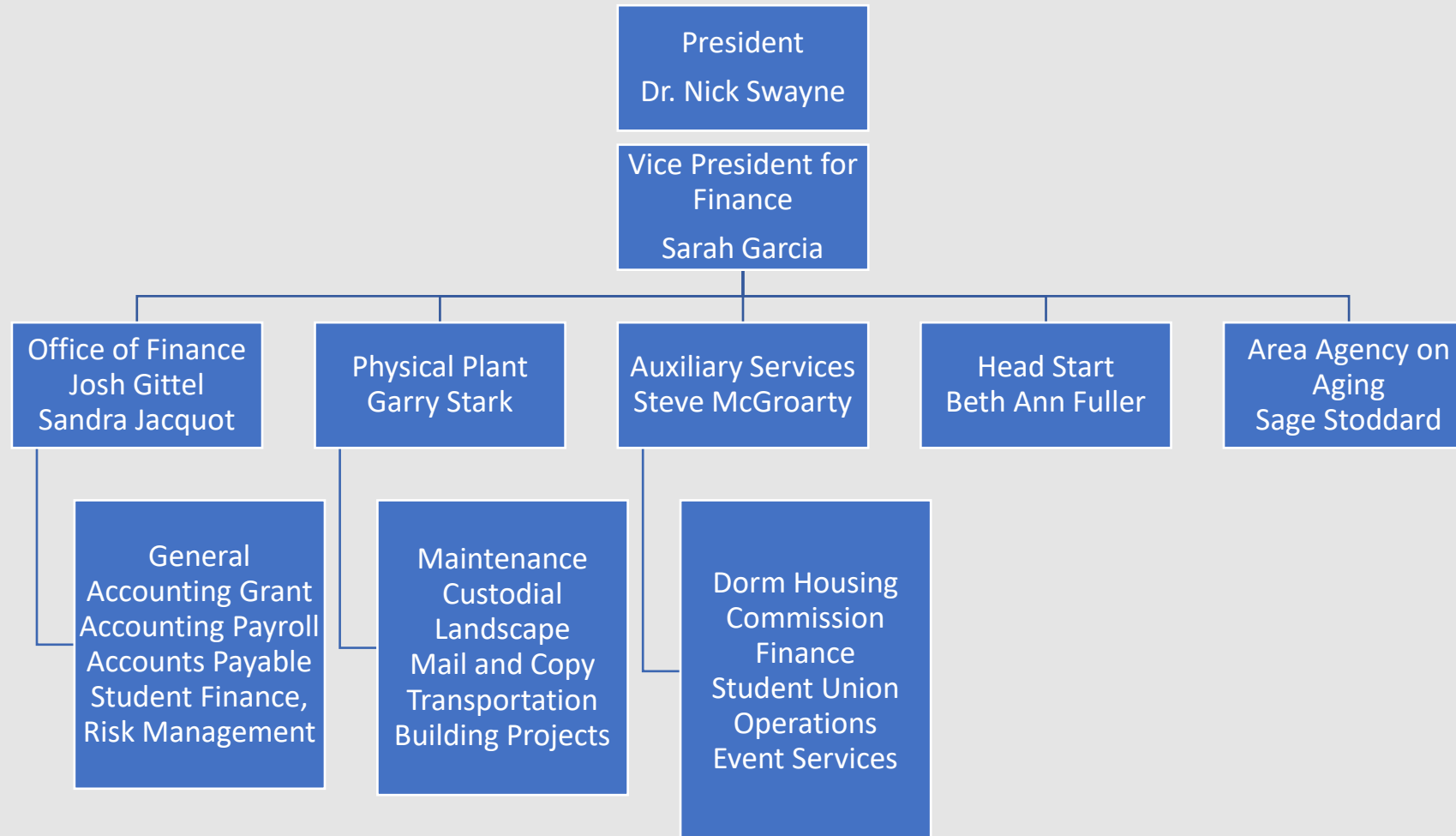


# Finance and Facilities

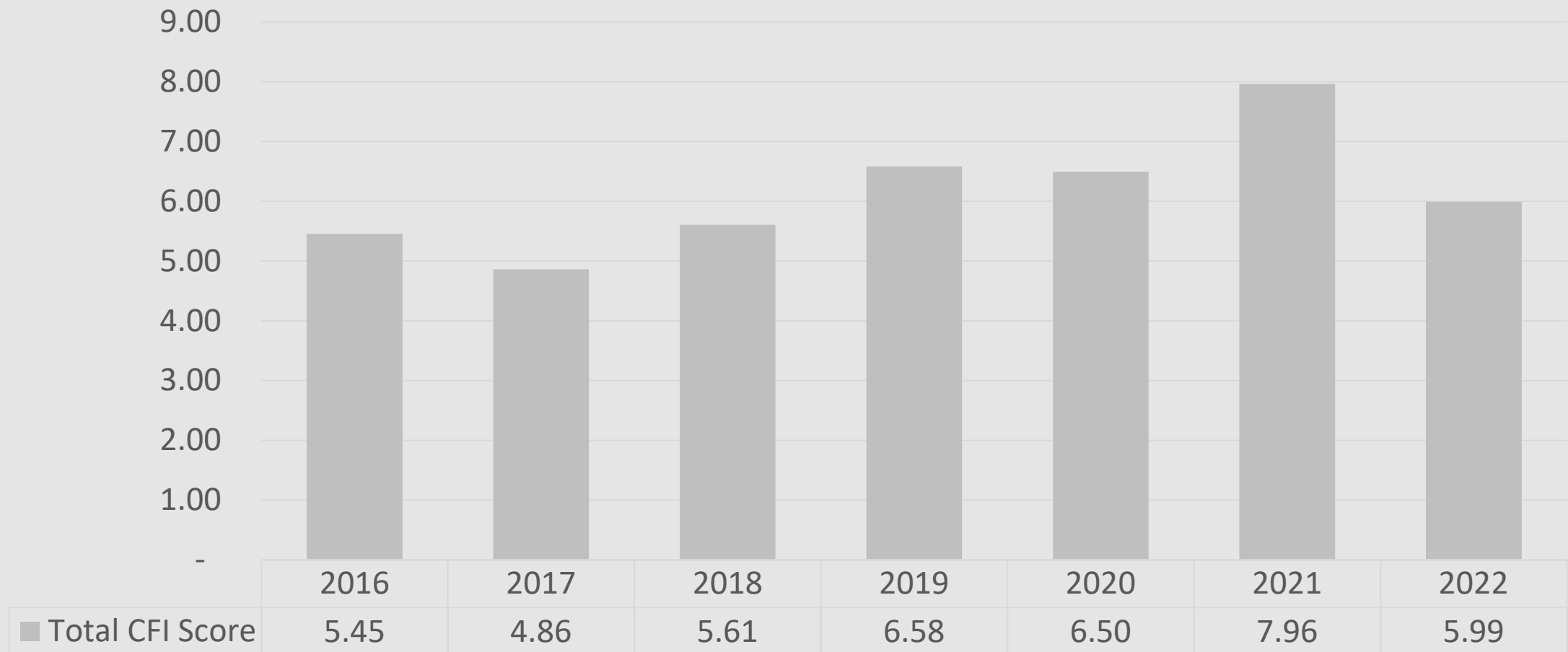
Recurring Report  
October 2023

**North  
Idaho  
College**

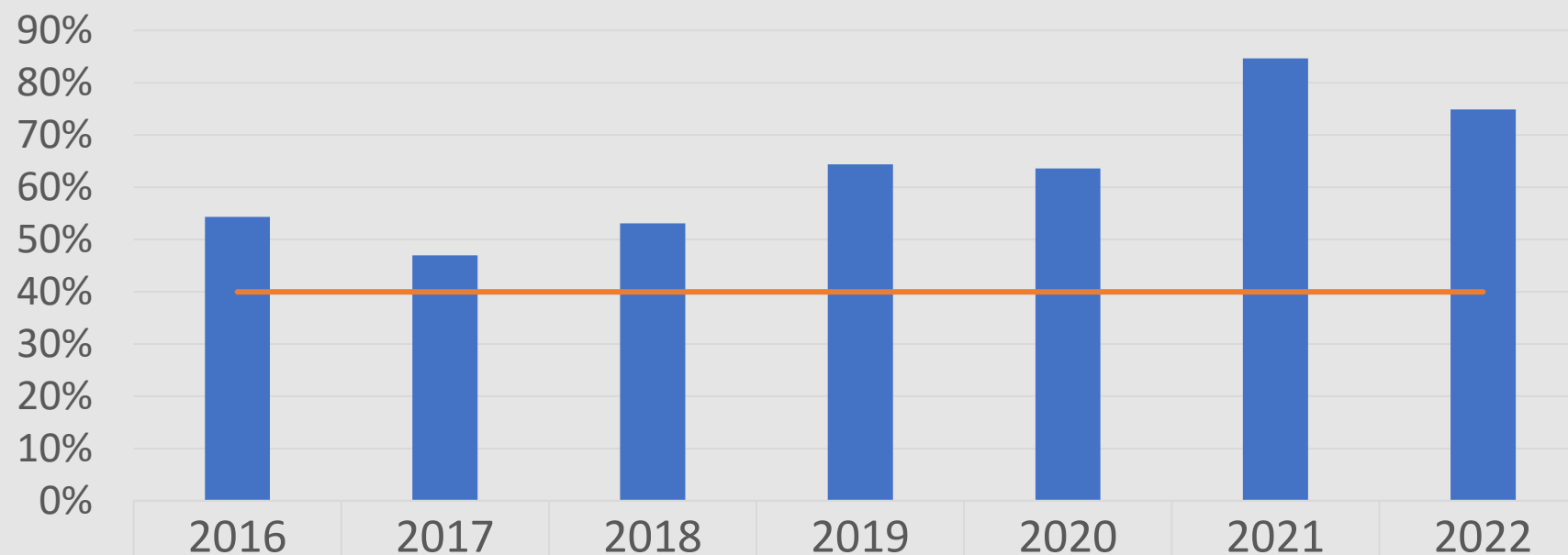
► *[nic.edu](http://nic.edu)*



# Total Financial Composite Index



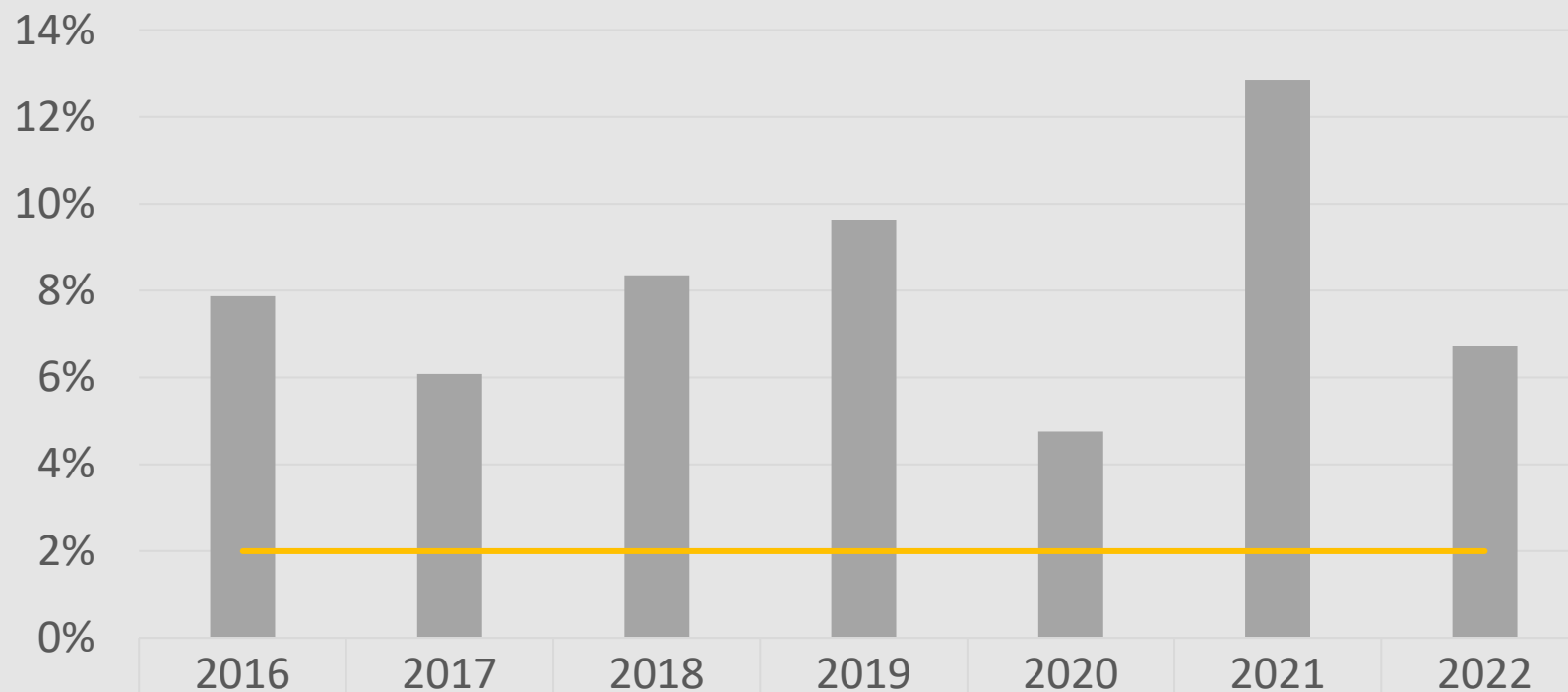
# Financial Composite Index Primary Reserve Ratio



■ Primary Reserve Ratio	2016	2017	2018	2019	2020	2021	2022
— Benchmark	54%	47%	53%	64%	64%	85%	75%
	40%	40%	40%	40%	40%	40%	40%

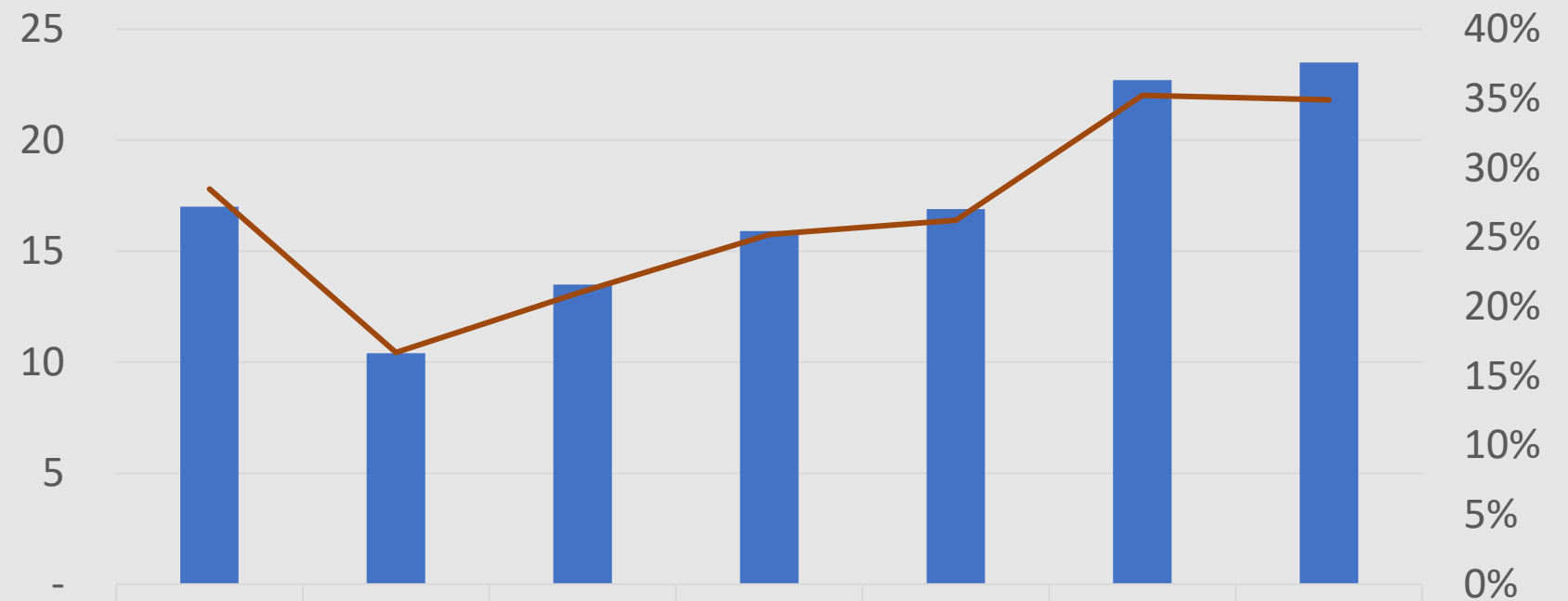
# Financial Composite Index

## Net Operating Revenues Ratio



■ Net Operating Revenues Ratio	8%	6%	8%	10%	5%	13%	7%
— Benchmark	2%	2%	2%	2%	2%	2%	2%

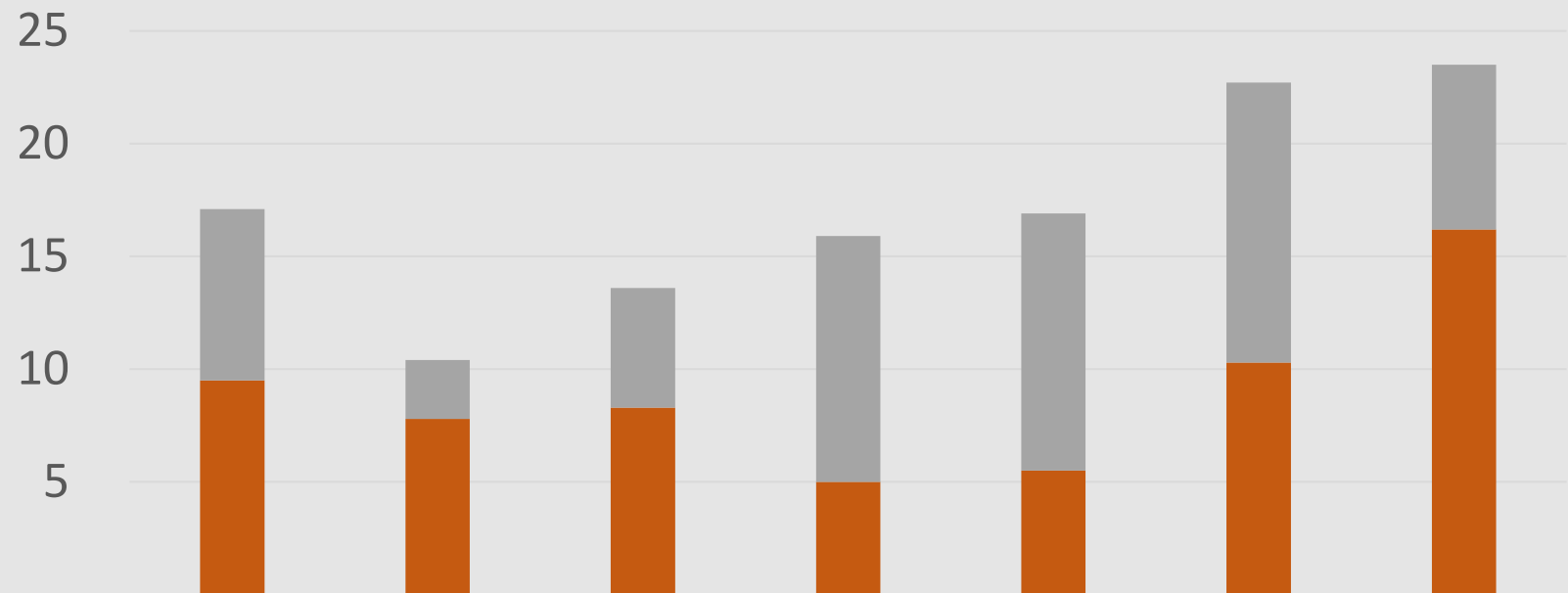
# Unrestricted Net Assets



■ Unrestricted Net Assets (in Millions)  
— As % of Operating Expenses

2016	2017	2018	2019	2020	2021	2022
17.00	10.40	13.50	15.90	16.90	22.70	23.50
28%	17%	21%	25%	26%	35%	35%

# Composition of Unrestricted Fund Balance



■ Capital Investment Reserve Balance (in Millions)
■ Undesignated Fund Balance (in Millions)

2016	2017	2018	2019	2020	2021	2022
7.60	2.60	5.30	10.90	11.40	12.40	7.30
9.50	7.80	8.30	5.00	5.50	10.30	16.20

# NIC Land and Buildings

	Acres	Building Sqare Feet
Main Campus	53.7	602,327
Ed Corridor Subdivision	18.7	29,000
Additional Adjucent Owned Properties	5.5	29,148
Owned Property Off Campus		
Parker Technical Education - Rathdrum	37.4	110,900
Riverbend/Workforce Training - Post Falls	14.5	31,610
Other	5.2	60,230
Affiliate Properties	0.91	5,518
<b>Total</b>	<b>136.0</b>	<b>868,733</b>

Leased Properties Sandpoint Center - Pine Street Annex Post Academy - Riverbend Area Agency on Aging Head Start
---



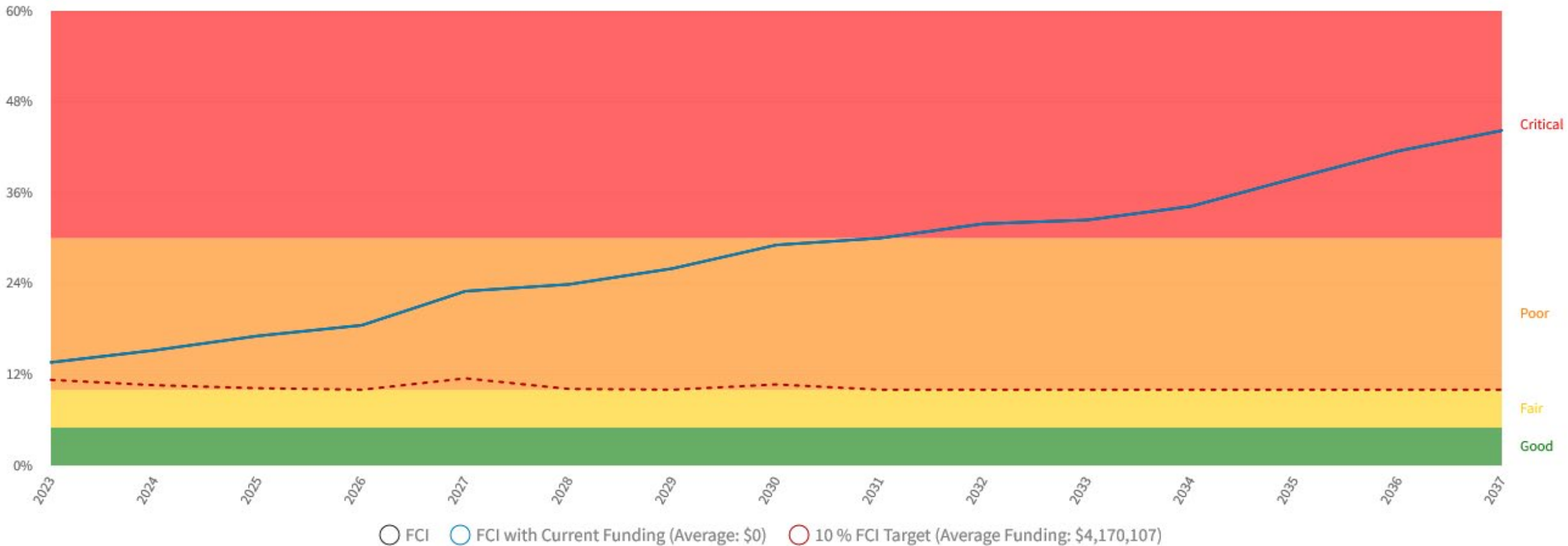
# Funding for Deferred Maintenance

- NIC is working through phase 1 of funding (\$3.8M) from the state for deferred maintenance.
  - Goal of funding is to address the deferred maintenance liability statewide.
    - Statewide Facility Condition Index (FCI) reduced to 5% in ten years
  - Projects include HVAC Systems, Roof repair/replacement, elevator upgrades, window replacements and generators
  - Division of Public Works has contracted with a third party to manage and execute the projects

# Facilities Condition Index (FCI)

Cost Cumulative FCI - Needs Analysis

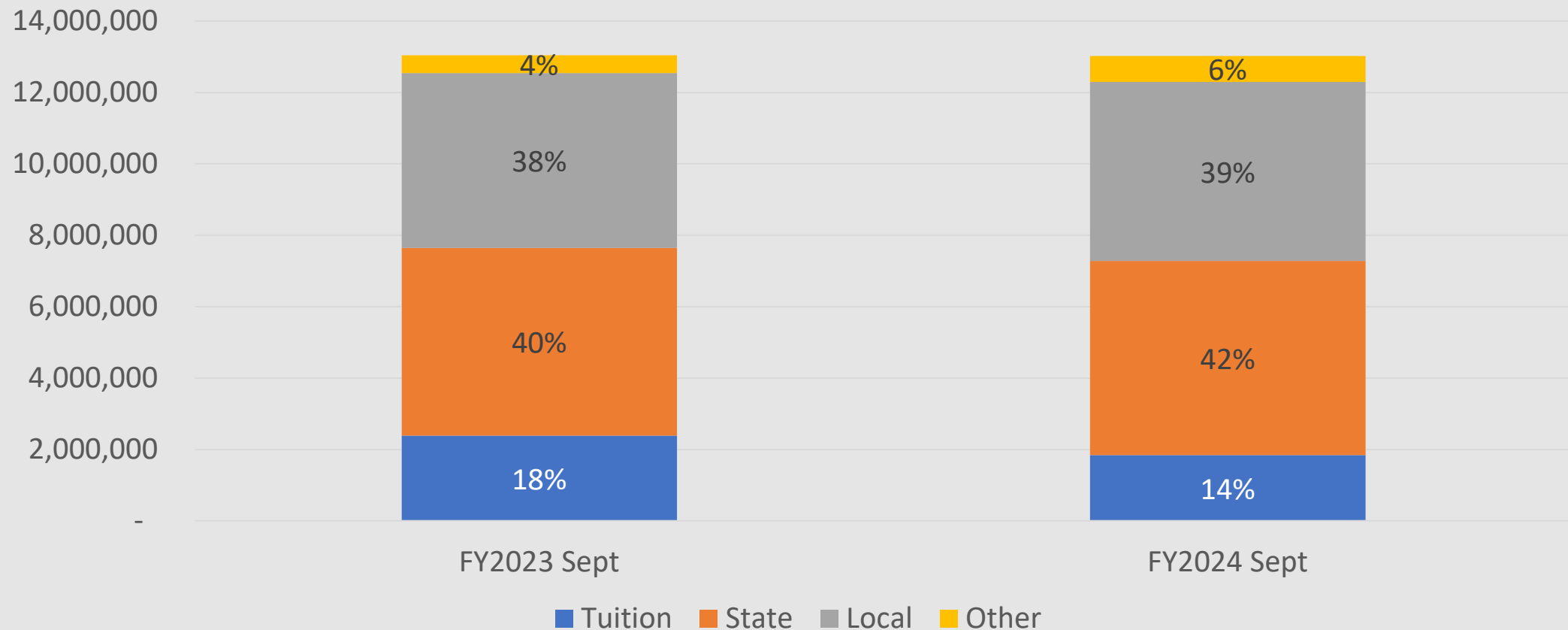
Target FCI of 10% in 15 Years Year 2023-2037 and where Facility Status = Active for University North Idaho College



# Annual Budget Cycle

	July	August	September	October	November	December
<b>State</b>		Final FY25 DPW request due Final FY25 Line Items due to State Board	Final State Budget Request Due	Presentation of FY25 Capital Request to Permanent Building Fund	Division of Financial Management and Governor review of FY25 budget request	
	January	February	March	April	May	June
<b>State</b>	JFAC Hearing for FY25 Budget Request	JFAC FY25 Budget Recommendation to Legislature	FY25 Appropriation Finalized	FY26 Line item guidance		Preliminary FY26 Division of Public Works Request Due
<b>NIC</b>	FY25 Budget Guidelines Established	Guidelines and Templates shared with budget managers	Roll Up of Budget	Finalize FY25 Request	Adjust Request if needed	Line items detail and balancing
			Requests Prioritization	First Reading with BOT	Second Reading with BOT	Upload to Accounting Program

# Year To Date Actual Revenue



# September Year To Date Expenses

