



North Idaho College

2025 YEAR IN REVIEW

Alumni and Friends



Investing in Dreams

Alumni Association Board of Directors

The NIC Alumni Association Board of Directors consists of alumni and community volunteers who strive to keep those who have been part of North Idaho College connected to the college.

Jim Lien '82, President
Sean Collins '17, Vice President
Marie Burns '21, Secretary
Kevin Reed '88, Treasurer
Dennis Grant '87, Immediate Past President
Wally Adams '61
Rayelle Anderson '89
Dean Bennett '76
Pam Claflin '68
Frank Darlington '66
Carrie Gibson '02
Troy Murphy '86
Blake Sanchez, Student Representative

NIC Foundation, Inc. Board of Directors

Founded in 1977 as an independent, 501(c)3 nonprofit charitable organization, the NIC Foundation encourages private support to enhance educational excellence and provide student scholarships.

Peter Smith, President
Rod Colwell, Vice President
Beti Becker, Immediate Past President
Ashley Lenz, Secretary
Michelle Schini Haneline, Treasurer
Elva "Cookie" Allan Tim Komberec
Jody Azevedo Denise Lundy
Pat Clevenger Chris Meyer
Jim Coleman Steve Meyer
Brad Dugdale Sue Thilo
Mark Fisher Troy Tymesen
Nick Granier Marc Wallace
Dean Haagenson Kory Wilson
Anne Hagman David Wold
K. John Young

Rayelle Anderson, Executive Director

On the cover: Graduates 2025

"Alumni and Friends," September 2025

This publication is published annually by North Idaho College Alumni Relations and the NIC Foundation.

*1000 West Garden Avenue
Coeur d'Alene, ID 83814-2161*

Vol. 18, Issue 1 Postage paid at Post Falls, ID.

Greetings from the Alumni Association and NIC Foundation



As I write this letter, I do so with pride in our college, gratitude for our community, and optimism for what is ahead.

As an NIC alum and retired educator, I have witnessed how vital our college is to our community and our educational system. NIC is a place of opportunity, transformation, and second chances. Through the support of our community, this is reflected every day on campus and in people's lives.

The Alumni Association is working hard to actively engage our graduates and build stronger connections between past and present. NIC is investing in programs that reflect the needs of today's students by supporting innovation while honoring the long-standing traditions that shaped us.

The future is something we will build together, and I invite you to be part of this next chapter. Whether through mentorship, outreach, scholarships, or simply sharing your story, you are an essential part of our ongoing journey.

Thank you for being a member of this extraordinary community. Together, we are stronger, wiser, and ready for what comes next.

Join the NIC Alumni Association today at nic.edu/alumni and share your story.

Jim Lien

North Idaho College Alumni Association President



As President of the NIC Foundation, I'm thrilled to share the incredible impact we're making, together.

Thanks to your generosity, we're awarding scholarships to over 1,000 NIC students each year, empowering them to overcome financial barriers and pursue their dreams. But we're not stopping there.

We're setting a bold new goal: increase our scholarship funding by \$500,000 annually. With your continued support, we can reach even more students,

change more lives, and fuel more futures.

This *2025 Year in Review* is packed with powerful stories of students whose lives have been transformed through your support. Their journeys are a testament to what we can achieve when we invest in education and in each other.

Let's keep the momentum going.

Your support isn't just a donation, it's a lifeline. Let's continue building a brighter future for our students, our college, and our entire community. I invite you to read the *Year in Review* and join us in making an even greater impact.

Peter J. Smith IV

North Idaho College Foundation President

Investing in Dreams

Thank you for Investing in Dreams!

Gifts to the *Investing in Dreams Scholarship* empower students to shape their futures by supporting their education and training, giving them the encouragement and resources they need to achieve their goals.



Sarah

Education

"I have always dreamed of attending college and becoming a teacher. With this scholarship, I will be able to reach my goals and fulfill the lifelong dream that I have in my heart. Thank you for the opportunity to receive this award. I am very grateful."



Will

Machining and CNC Technology

"I am really looking forward to having a job that I am good at and enjoy. My goal for the machining program is to graduate debt-free and to complete the classes with excellence. Through your generosity, you have impacted my life so that I can also be one of those people making an impact in their communities for the better."



Shaylie

Dental Hygiene

"I knew I wanted to be a dental hygienist from the age of 10. Getting accepted into North Idaho College's Dental Hygiene Program was a dream come true. I am truly grateful for this scholarship and excited to continue my journey with your support. Knowing I have your support as I pursue my educational goals means so much to me."

Make a contribution in support of educational excellence and student success today! Use the enclosed envelope or contact the NIC Foundation office at (208) 769-5978. Gifts can also be made securely online at nic.edu/give.

Message from the College President



NIC is celebrating a period of impressive growth and achievement, reaffirming its commitment to student success and community impact. Enrollment was up 15% in Fall 2024, reversing over a decade of declining numbers and marking some of NIC's highest enrollment figures in recent history. The trend continues with increased enrollment for full-time and dual-credit high school students.

NIC's hands-on approach and expanding services are helping more students launch careers quickly. Our renowned nursing program remains Idaho's top-ranked, and the most recent cohort of surgical technology graduates achieved a 100% exam pass rate for national certification – well above the national average. With a 92-year legacy of skill-building for North Idaho residents, our technical and workforce training programs are thriving, enhanced by strong ties to local employers.

As NIC welcomes the future, our focus on student achievement, quality instruction, and vibrant campus life continues to energize the region and inspire alumni pride. There's so much happening at NIC – come be a part of it!

Nick Swayne, Ph.D.

North Idaho College President

■ Alumni Award Recipients Honored

Each year, the North Idaho College Alumni Association Board of Directors recognizes outstanding individuals who greatly enhance NIC and the Alumni Association through their commitment and service. The Alumni Association is proud to honor Steve Widmyer as Distinguished Alumnus, Mary Sanderson as Alumna of the Year, and Kevin Schneidmiller as Honorary Alumnus. The awards were presented at the annual Scholarship Celebration and Alumni Award Ceremony in November of 2024.



Steve Widmyer was selected for the Distinguished Alumni Achievement Award for his accomplishments in his profession, community service, and a decades-long impact on North Idaho College.

As a Coeur d'Alene High School graduate, Steve has continued to support the community throughout his career. He served as mayor of Coeur d'Alene from 2014–2022 and continues to demonstrate his deep love for Coeur d'Alene through his community leadership, service, and generous contributions.

Steve has served NIC over the decades in various roles. He was a cabinet member of the Building the Future Campaign in support of the Parker Technical Education Center, a former NIC Trustee, and a member of the NIC Booster Club. Steve's accomplishments set an example for alumni, students, and employees.

"For me, being a student at North Idaho College meant an opportunity that I may not have otherwise had. North Idaho College provided the foundation for me to succeed not only professionally, but in life," Steve says. "Receiving the Distinguished Alumni Achievement Award is a tremendous honor. I am very proud to be a graduate of North Idaho College. NIC has thousands and thousands of great alumni. To be recognized with this award means the world to me. Thank you."



Mary Sanderson, M.D. was recognized as Alumna of the Year for her lifelong dedication to promoting health and wellness in our community and advancing educational opportunities at North Idaho College and beyond. Her unwavering commitment serves as a powerful example of how supporting both community and education can create a lasting legacy.

For more than 20 years, Dr. Sanderson has been an active and valued member of the North Idaho College Alumni Association. She played a key role as a capital campaign cabinet member for the NIC Foundation's Providing Opportunities – Fulfilling Dreams Community Campaign. This campaign helped secure funding for the Meyer Health and Sciences Building, which opened in 2005.

Dr. Sanderson's enduring dedication to patient care, community service, and philanthropic leadership is extraordinary and richly deserving of this recognition.

In response to receiving this award, Dr. Sanderson says, "NIC is truly a gem for the community. It gives many an affordable alternative to prepare for an exceptional career and helps support our local businesses and trades. The college provides opportunities for high school students to earn dual credit, is a venue for arts and cultural events, athletics, and a place for the whole community to continue their education."



Kevin Schneidmiller was selected for the Honorary Alumnus Award in recognition of his long-standing support of North Idaho College's construction and trades programs.

Kevin serves as Vice President of Land Development for Greenstone Homes and Neighborhoods and is a strong advocate for education and community in the Inland Northwest. His commitment includes serving as a Post Falls School Board Trustee in the 1990s, working to secure donated land for public use, such as parks, ball fields, and community gathering spaces, and participating annually in the Post Falls High School Awards Night.

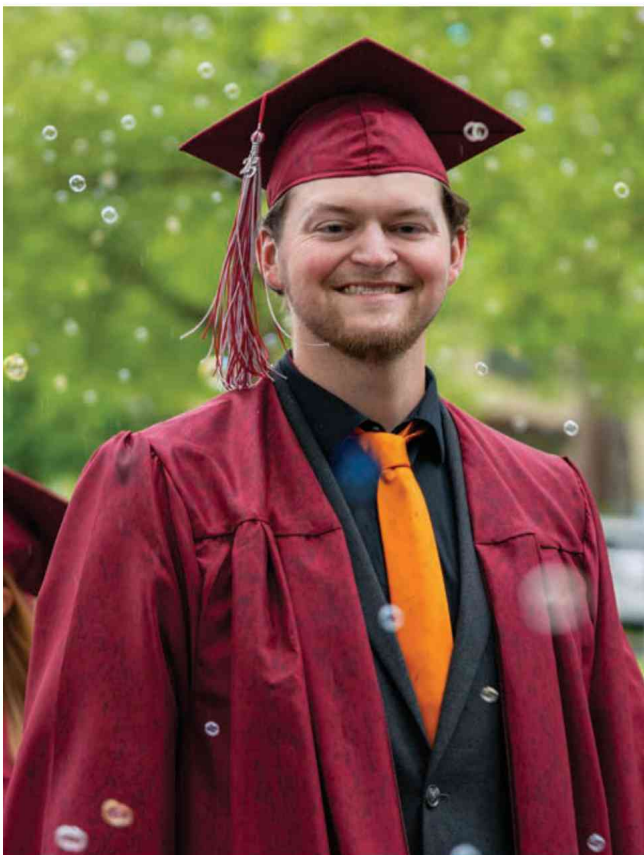
At North Idaho College, Kevin brings his industry expertise and philanthropic spirit to his volunteer work. He serves on the NIC Foundation's Construction Oversight Committee and plays a vital role in the construction of the Really BIG Raffle grand prize home. He contributes both guidance and resources to maximize the fundraiser's impact on student scholarships and program enrichment.

"NIC means a lot to me because of its mission to provide education and training," Kevin says. "Seeing the passion of its educators and students is truly rewarding. Being part of the Really BIG Raffle and witnessing its impact through scholarships has been wonderful. I don't volunteer for recognition, so to be

selected as the 2024 Honorary Alumnus means a great deal. Being associated with such a great institution will always be meaningful to me."

Kevin's dedication to education, community development, and student success is inspiring and truly deserves recognition.

To nominate an individual for an Alumni Award in recognition of their commitment to NIC and the community, visit nic.edu/alumni. Alumni Award nominations are accepted year-round.



Join the NIC Alumni Association

Join thousands of alumni who stay connected with North Idaho College. Membership is free!

The Alumni Association is open to anyone who has completed at least 12 academic credits or the first semester of a certificate or apprenticeship program at NIC. You don't have to be a graduate to become a member.

Benefits include membership eligibility at the Student Wellness and Recreation Center, 50% discount for home athletic events, 10% discount on logo merchandise at the Cardinal Bookstore, and more!

JOIN TODAY!

Visit nic.edu/alumni or scan the QR code.





Retiree Spotlight – Michael and Barbara Miller

For Mike and Barbara Miller, education has always been a core value.

Barbara grew up in a Missouri home where education and creativity were highly valued. Her academic journey from undergraduate studies through her PhD was supported by scholarships, a gift she doesn't take for granted. Mike is originally from Illinois. His appreciation for education and sense of responsibility was instilled during his prep school years and continues to guide his belief in giving back. These principles inspired their professions and aspirations throughout life.

Mike and Barbara met as undergraduates at the University of Missouri, where they connected over a shared passion for the outdoors. After marrying, they spent a short time at Utah State and Oregon State before making Coeur d'Alene their home in 1971. Mike began working at North Idaho College and Barbara at Eastern Washington University, which led to 31 and 44 years, respectively, of dedication to higher education.

At NIC, Mike served as both an instructor in economics and business and later as the Chair of the Business Division. He recalls his time at NIC with great affection, noting the strong sense of community and shared passion for education among his colleagues. "It's a very special place," he says.

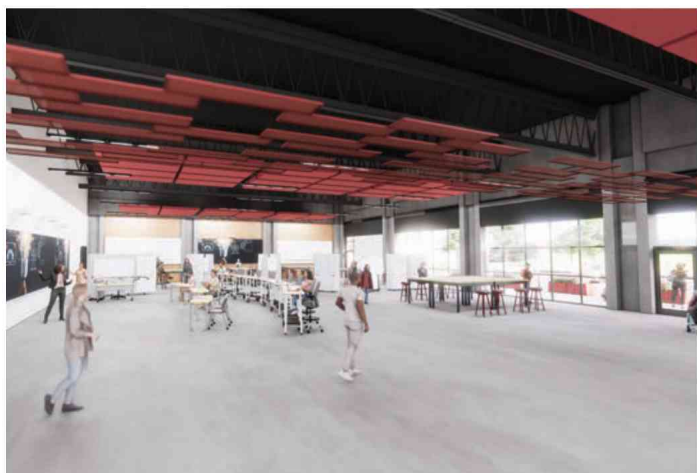
Barbara also enjoyed a fulfilling career at EWU as an art historian and professor. She relished her academic role and the many opportunities it provided, such as study abroad trips to Europe. These immersive experiences allowed her students to explore language, culture, and art firsthand.

In retirement, Mike and Barbara remain active in lifelong passions. They own a farm in Illinois and a ranch in Kansas. Mike enjoys implementing sustainable practices in farming and ranching, referred to as regenerative agriculture and holistic grazing. He has also developed an interest in genealogy, a pursuit that began with taking a class at NIC. Barbara continues to explore art, but now as a creator. Her recent work culminated in an invitational art exhibition at the Kolva-Sullivan Gallery in Spokane, a milestone that reflects her continued commitment to artistic exploration. Together, the Millers enjoy spending time with their grown children and are deeply involved in the lives of their grandchildren.

Mike and Barbara's story is one of exploration, generosity, and dedication to each other, to education, and to the world around them. That shared commitment to education inspired their decision to establish a scholarship fund. "We really enjoy being able to help students pursue their dreams," they say. Their legacy lives on, not just in the institutions they served, but in the lives of the students they continue to empower.

Make a contribution in support of educational excellence and student success today! Use the enclosed envelope or contact the NIC Foundation office at (208) 769-5978. Gifts can also be made securely online at nic.edu/give.

NIC X-Labs: Shaping the Future Through Innovation



Architectural renderings of the future NIC X-Labs space in the Hedlund Building.

North Idaho College is dedicated to offering meaningful, relevant, and relationship-rich learning opportunities for students that help them address questions like, “Why is this important?” and “How will I apply this in my life?”

This mission-activated teaching and learning strategy is coming to life in a new project called NIC X-Labs. Plans are underway to create a venue on the Coeur d’Alene campus designed to foster impactful hands-on experiences and encourage collaboration among students, instructors, and the community.

In 2022, NIC President Nick Swayne invited students, faculty, staff, community members, and industry partners to share their time, insights, and aspirations about the future of NIC’s Hedlund Building.

“I’m pleased to report that this input has helped to shape a bold and inspiring vision for the future of our campus,” says Dr. Swayne. “We are excited to introduce a key part of that vision with NIC X-Labs.”

NIC X-Labs will be a vibrant lab on campus where creativity, collaboration, and curiosity converge to tackle real-world challenges. More than just a physical space, it is a dynamic ecosystem where every participant is both a teacher and a learner. At NIC X-Labs, students, faculty, community

members, and industry partners can unite to explore the limitless possibilities of design thinking. The “X” in X-Labs represents the powerful intersection where these groups come together to exchange ideas, solve real-world problems, and grow through shared learning.

Marita Diffenbaugh, NIC Director of Innovation, says NIC X-Labs is for everyone – from students exploring new ideas to faculty seeking interdisciplinary collaboration, community leaders addressing local issues, and industry partners driving innovation.

“This public learning venue will offer the tools, support, and environment to make meaningful progress and build lasting relationships,” Marita says. “Through hands-on learning, real-world problem solving, and a strong emphasis on relationship building, NIC X-Labs will create opportunities for continued growth and impactful solutions. Join us in shaping the future, where ideas flourish, people thrive, and together, we make a difference – locally and globally.”



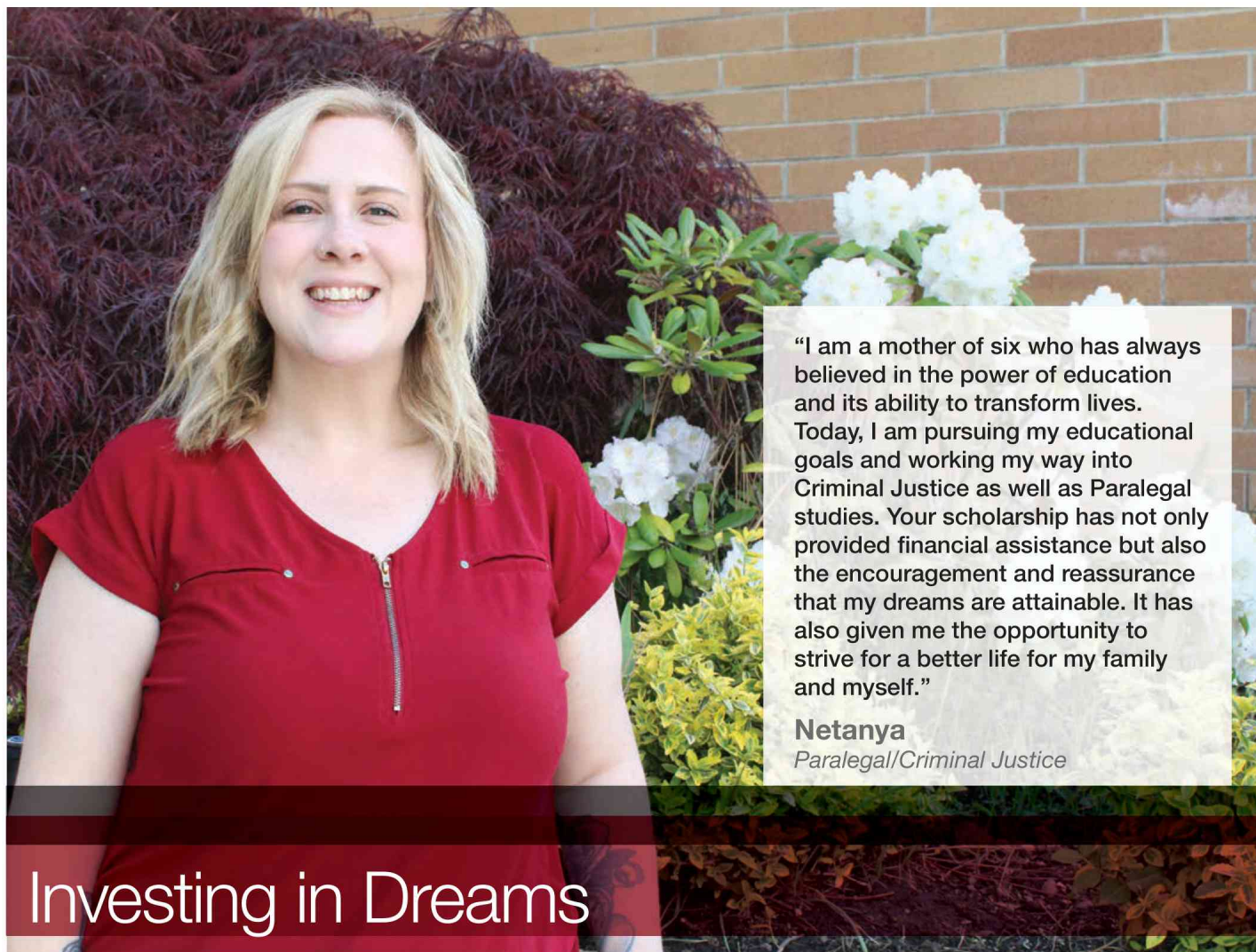
Marita Diffenbaugh

For more information about NIC X-Labs, visit nic.edu/x-labs.



I am so thankful to receive this scholarship. I am an aspiring aerospace engineer with sights set on NASA, space travel, and beyond. I work hard to afford college, and I spend my free time studying. This award allows me to chase my dreams. I am determined to accomplish my goals.

Isaiah
Engineering



"I am a mother of six who has always believed in the power of education and its ability to transform lives. Today, I am pursuing my educational goals and working my way into Criminal Justice as well as Paralegal studies. Your scholarship has not only provided financial assistance but also the encouragement and reassurance that my dreams are attainable. It has also given me the opportunity to strive for a better life for my family and myself."

Netanya
Paralegal/Criminal Justice

Investing in Dreams

Your support is vital to the overall success of NIC and the students. Make a gift today!

WAYS to give

- Mail your check in the enclosed envelope.
- Give securely online at nic.edu/give.
- Donate gifts of appreciated assets, such as stock or real estate.
- If you are 70½ or older, make a tax-favorable contribution directly from your IRA.
- Designate the NIC Foundation as a beneficiary in your will, trust, retirement account, or life insurance policy.
- Establish a named scholarship for your social organization, business, or family.
- Make a contribution in honor or in memory of a loved one.

Maximize your tax credit!

Donations to the NIC Foundation are eligible for the Idaho Education Tax Credit. Idaho taxpayers qualify for a 50% state tax credit for charitable contributions to education. In addition, your gift may be eligible for both a federal and state income tax deduction. Consult your tax advisor for more information.

Idaho Education Tax Credit

Individuals	50% for gifts up to \$1,000
Married Couples	50% for gifts up to \$2,000
Corporations	50% for gifts up to \$10,000

NIC Foundation Honor Roll of Contributors

THANK YOU for your investment through the North Idaho College Foundation. Your contribution directly helps students in their pursuit of a quality education and bright future.

Recognition in Gift Societies reflects total cash and in-kind gifts received between July 1, 2024 and June 30, 2025. If your name was omitted, misspelled, or listed incorrectly, please contact the NIC Foundation at (208) 769-5978.

Gift Society

College by the Lake (\$250-\$499)
Fort Grounds (\$500-\$999)
President's (\$1,000-\$4,999)
Lee Hall (\$5,000-\$9,999)
Cornerstone (\$10,000+)
Coeur (cumulative gifts of \$100,000+)
Legacy (NIC named in estate plan)

Perks (invitations to):

Scholarship Celebration and Alumni Awards
+ Donor Socials
+ Lunch with the President
+ VIP Receptions
+ Special Recognition
+ Exclusive Privileges
+ Exclusive Privileges

COEUR SOCIETY CUMULATIVE GIFTS OF \$100,000 and above

All Within My Hands Foundation/
American Association of
Community Colleges
Avista Corporation
Avista Foundation
BMC
Kit Scates Barnhart
Edward and Mary Bobby
George and Dorothy Carlson
Carr Foundation
Eula and Earl Chilcott
Coeur d'Alene Casino
Coeur d'Alene Rotary Club
Coeur d'Alene Tribe
Jim and Jerre Coleman
James and Carolyn Crowe
Harold and Katherine Damiano
Bob and Leona DeArmond
Delta Dental of Idaho
Linda and Jim Duffield
Empire Airlines, Inc.
Greenstone Homes
John and Sadie Harrison
Jennifer Henage
Lyle Henage and Maryann Walsh
Idaho Central Credit Union
Idaho Community Foundation
Idaho Forest Group, LLC
Charles and Phyllis Imus
Inland Northwest Health Services
Itron
J.A. & Kathryn Albertson Foundation,
Inc.
JLSSAA
Sarah DeArmond Jones
Kootenai Health
Kootenai Tribe of Idaho
Laura Moore Cunningham
Foundation, Inc.
Lockheed Martin Space Systems
Company
Claire McDonald
Steve and Judy Meyer
Myron Mikus
Jessie Molstead
Ray and Jane Morgan
Mountain West Bank
Northwest Hospital Alliance
Northwest Specialty Hospital
Tony and Martha Norton
Numerica Credit Union
Earl and Eva Ogg
Doug Parker
Jim and Diane Parker
John Pointner
Edith Polston
Edith Marie Reed
Roy and Leona Nelson Foundation

STCU
Don and Sue Sausser
Robert Scates
Gary Schneidmiller
Norman and Nanci Shaman
H. C. Slamberg
Donald and LaVerne Taylor
Craig and Rose Tedmon
Peter and Emma Van Laken
A. K. and Ellen Walden
Tom and Irene Wilson
John and Connie Young/Young
Construction Group of Idaho, Inc.

CORNERSTONE SOCIETY \$10,000 and above

Anonymous
Carl and Constance Bauer
City of Coeur d'Alene Fire Department
James and Carolyn Crowe
Delta Dental of Idaho*
Greenstone Homes*
Dean and Cindy Haagenson*
Anna Holmberg
Idaho Community Foundation*
Craig and Marissa Johnson
Stephen and Janice Johnson*
Eve Knudtsen and Wayne Cofield
Laura Moore Cunningham
Foundation, Inc.*
Grant Minor
North Idaho Women and Their Money
Scholarship Fund in the Idaho
Community Foundation
Numerica Credit Union*
STCU*
Galen and Miyoung Schuler*
Shoshone Medical Center

LEE HALL SOCIETY \$5,000 - \$9,999

Derek and Connie Antonelli*
Priscilla Bell
The Coeur d'Alene Resort
Coeur d'Alene Tribe
Brad and Mary Corkill
Lloyd and Jamie Duman*
Mary Anne Evans-Frank
Family Learning Organization*
Fidelity Charitable*
Green Diamond Resource Company
Hecla Charitable Foundation
Idaho Educational Access Fund in the
Idaho Community Foundation*
Steve and Judy Meyer*
Michael and Barbara Miller
Nep and Mary Ellen Lynch CTE
Scholarship Fund in the Idaho
Community Foundation*
Dr. Mary A. Sanderson
Kerry and Tricia Schierman
T. Rowe Price Charitable

Taverna
Jan and Troy Tymesen*
Washington Trust Bank*
John and Connie Young/Young
Construction Group of Idaho, Inc.*

PRESIDENT'S SOCIETY \$1,000 - \$4,999

Anonymous
John and Joanna Adams*
Gale Akers*
American Endowment Foundation
Forrest Ames
Rayelle and Mike Anderson*
Avista Foundation*
Jody Azevedo*
Darrel and Sherry Bailey*
Bank of America Charitable
Foundation*
Esther Baran
David and Linda Barnes*
Brian Bereman
Bill Boszy and the Backbeat
Bi-Mart
Duane Brown*
Janell Burke*
Lita Burns*
Stewart and Molly Butler*
Callahan Zeller Foundation, Inc.*
Seth and Crystal Campbell*
Scott Carlson and Susan Engebretson
Tom and Donna Chasse*
Chevron*
Carla Cicero and Mike Gridley*
City of Stateline*
Dorothy Clark*
Patrick and Shannon Clevenger*
John and Gayle Cochrane
Coeur d'Alene Cellars*
Coeur d'Alene Garden Club*
Jim and Jerre Coleman*
Rod and Debbie Colwell*
Janette Compton
Phil and Kim Corlis*
Tim and Eileen Crowder*
DAFgiving360
Frank Darlington III
Disabled American Veterans*
Victor and Lisa Duarte*
Brad and Shariac Dugdale*
Jennifer Emerson
Wendy Emond
Empire Airlines, Inc.*
James and Barbara Fillmore
Mark and Raelene Fisher*
Brad Fuller
Suzanne Gerber*
Nick and Alison Granier
Daniel and Linda Green
Gustavel Wynn Foundation/Jack and
Judy Gustavel*

H2A Architects, P.A.*
Hagadone Media Group*
Wally and Wallapa Hendrickson
Heinz and Anne Zegke Foundation at
Innovia Foundation
Dave and Chris Holloway*
Estate of Charles K. Howard*
Idaho Central Credit Union*
Idaho Forest Group, LLC*
Innovia Foundation*
Harriet Jacquot*
Sandra Jacquot*
Michele and Geary Jerde*
Paul Johnson
Rolland and Jeannie Jurgens
Marion Keating
Kissler Family Foundation*
Kiwanis Club of Coeur d'Alene*
Tim and Linda Komberec*
Kootenai County Task Force on
Human Relations, Inc.*
Mark and Susan Kubiak Fund at
Schwab Charitable
Kutteruf and Robinson Fund at
Innovia Foundation*
Lakeshore Realty
James Lea and Judi Davis
Ashley and Dan Lenz*
Matthew Lieven
Like Media*
LX Hausys
Marc and Maggie Lyons
Jason and Janell Macek
Steve and Laurie Masterson*
Gina Mazzella*
Dr. Christine Mahoney Meyer*
Morgan Family Charitable Fund in the
American Endowment Foundation
Ray and Jane Morgan*
Larry Morris
My Sushi Sensei
Kay and Jo Ann Nelson*
Norco, Inc.*
Northwest Specialty Hospital*
P.E.O. Chapter AG
Parker Subaru
Cindy Pavel*
RW RAMSEY, LLC
Dr. Thomas Rau and Susan Dummer
Katherine and Lanny Ream*
Brandon and Peggy Rice
James Riley
Octavian and Sydney Rivas
Heidi Rogers
Jim and Donna Runge
Luke and Deb Russell*
Don Schierman
Schweitzer*
Scraps BBQ*
Jesse and Erin Short
Katie Spiker

*Signifies three or more years of consecutive giving. If you've inadvertently missed a year in your consecutive giving, it's not too late to update your giving history. Make your contribution today at nic.edu/give and note the year to which you want the gift applied.

NIC Foundation Honor Roll of Contributors

St. Luke's Episcopal Church
Barbara Suveg
Nick and Nicky Swayne*
Beverly and Pat Tebo
Ted and Tammy Tedmon*
Dr. Tom and Sue Thilo*
Verdis
Wagstaff, Inc.*
Marc and Nancy Sue Wallace*
Raymond and Audrey Watkins
Levi and Jolie Wenglikowski*
Julie and Marty Westbrook*
Dr. David and Kristine Wild*
Tarie Zimmerman and Jim Barton

FORT GROUNDS SOCIETY \$500 - \$999

Anonymous
Advanced Benefits a Division of Alliant
Aileen Agnew
Elva and Chief Allan*
Paul and Julie Amador*
American Truck Historical Society
Inland Empire Chapter
Charles Best and Joanne Sutton-Best*
Troy and Katie Braga
John and Debra Bravo
Lonny and Susanne Bromley*
Pam Claflin*
Jim and Colleen Denning Family
Charitable Fund at DAFgiving360
Robert and Teresa Farr Fund at
Innovia Foundation
Beth Ann Fuller*
John and Terri Goedde
Helo and Katy Hancock
George and Cathy Hayes
Hewes Marine Company*
Robert Holman
Levi Inman*
Kendra and David Johnson*
Richard and Jill Jurvelin
Keith and Roxanne Kusler
Denise Lundy and David Ronalds*
Magnuson McHugh Dougherty CPAs
LLC*
Laura and Trent Matson*
Rich and Barbara McKernan*
Micron Technology
Claudia Miewald*
Gerald Green and Kathleen Miller-Green*
Miller Stauffer Architects
Danny and Kathy Mooney
Joe and Lynn Morris*
Alexander and Beth Nickolautus
Northwestern Mutual Foundation*
Bruce and Judi Owens
John and Rebecca Powers
Runge Furniture
Doug Rupiper and Sarah Day
Steve and Karen Ruppel
Jack Russell*
Peggy Schnell*
sixtwofour designs*
Betty and Joe Simon*
Peter and Anna Smith*
Lanny Stein*
Antal Suveg
Daniel Taylor*
Tim's Special Cut Meats
Dennis and Kimber Travis
Laura and David Umthun*
Dennis and Sherry White Charitable

Fund in Fidelity Charitable
Ruth Willford
Kory and Marni Wilson*

COLLEGE BY THE LAKE SOCIETY \$250 - \$499

Anonymous
Daniel and Sarah Adams
Doug and Peggy Albertson*
American Truck Historical Society
Columbia Basin Chapter
Associated Appraisers of North Idaho*
ATHS Blue Mountain Chapter
Dave and Beti Becker*
Boise Valley Society of Friends
Ty and Sarah Browning
Carey Carlson*
Rachel Caulk*
Coeur d'Alene Summer Theatre
D.A. Davidson & Company*
Dan Demchuk and Shannon Carroll
Angela Earnhart
Margaret Fedje
Joyce Ferrell*
Footprint Log Homes
Sarah Garcia*
Dan Gookin*
Tami Haft*
Jim and Gail Hawkins
Jon and Cyndi Hippler
Idaho Transportation Department*
Itron
Roger and DeAnn Johnson*
Ryan and Michelle Johnson
Wendy Joling
Edward & Susan Leach*
Tom and Carolyn Leege
Katie Lien
Joseph Lykins*
John F. Magnuson
Vicki Markizon
Hank and Betsy Martin
Holly Moore*
Estate of Doris Moorehead
Doug Nelson*
Kelly Nolan*
North Idaho College Outdoor Pursuits*
Amy Page*
Suzanne Polle
Gary and Tamara Power
Rory and Tamara Quayle
Don Robson
Snap-On Industrial*
Edwina Stowe
The Local Body Shop
Philippe and Linda Valle*
Fern VanMaren
Vine and Olive*
Steve and Marie Widmyer
Lloyd and Patricia Witham
Women's Gift Alliance Fund in the
Idaho Community Foundation

SUPPORTERS UP TO \$249

Anonymous (5)
Olive Allison and Edward Lockwood
Dale G. Andersen*
Margaret Appleman*
Nellie Armstrong
Arlene and Joe Baerlocher
Duncan and Sherry Bell*
Todd Best
Beta Sigma Phi Omega Master

Robin Blake*
Glenn and Gerald Borden
Bill and Joan Boyd
Ray and Barbara Bradley*
Barbara Brouillard
Steve Burns
CARSTAR of Hayden
Cynthia and Michael Cheeley
Becky Cochran*
Coeur d'Alene Art Study Club
Coldwell Banker Schneidmiller Realty
Doug Cresswell*
Daft Badger
Rena DeHaas
Francis and Melanie Droesch*
Robb Duffield*
Sandy and Jeanne Emerson
Leianne Fausett
Larry and Gail Featherstone
Gary Freeland
Carol Fundane't
Sharon Funkhouser
Tim and Della Gehring
Bryan and Jillian Gill
Gary and Anne Hagman
Casey Hallett
Rob and Michelle Haneline*
Terry and Marilyn Harwood*
Sherry Hayes*
Bridget Hill
Wendy Hough-Eaton*
Pam Houser
Carmela Hughes*
Idaho Pi Master Chapter
Tammie Jo Iverson
Joni Jacobs
Joe Jacoby
Diane James
Jeff and Debbie Johnson
Polly Johnson
Wayne Johnson
Tara and Michael Keith
Kurt and Cindy Kimberling
Susan and David Kinkade*
Kroger*
Marvin Krueger
Lucy and Larry Lepinski
Ann Lewis*
Kathy and Butch Lieggi
Jim and Nita Magnuson
D. James Manning
Deborah McDermott and Warren
Middlemist
Sarah McLain
Kristin Mendoza*
Nancy Mertz
Dean Miles*
Napa Auto Parts
Rhonda Nelson*
Ronald and Pamela Noah*
North Idaho College Aspiring Artists
Club
Mary Ortman
Lee Ostrom*
Eric Owen
Anne and Tom Peebles*
Dan and Kathryn Pinkerton
Don and Arlene Pischner
Jeane Plastino-Wood
Marie and Ed Price
Gerald Richardson
Amanda Roberts
Tracy Robnett
Louisa Rogers

Steve and Janie Roth
John and Nancy Runge*
Janie and Dave Sande
Robert and Jennifer Schmidt
Gerald and Judith Scholten
Beverly and Louis Schumacher*
Schweitzer Engineering Laboratories*
Brian Seguin
Patty Shea
Stephen and Cedris Shepperd
Sherry Simkins
Sally Simundson
Richard and Carole Skinner*
Meagan Snyder
Joanne Sonnen
Steve, Sue and Austin Sonnen
Patsy Sorenson
Graydon and Tammi Stanley
Larry and Margaret Stein
Dennis and Beverly Stettler*
Sharon Strobel
Estate of Donald and LaVerne Taylor
Irene Terhaar
Graham Thompson
Kerri and Robert Thoreson
Steven and Lisa Troxel
Kim and Danny Vestal*
Marilee Wallace
Jeff and Darcy Ward*
Teri White
Fritz Wiedenhoff
Norman and Patricia Wiegele
Liza Wilcox*
Diane Wilkinson
Alan and Dani Wolfe
Sheila Wood*
Parker and Kay Woodall
Mindy Wright

IN MEMORY OF

Ralph and Maxine Allison
Tom Brown
Bruce Brown
Steve Button
Carol Crowe
Cal DeHaas
Mark Harris
Eleanor Howes
Robert V. Hough
Rod Jessick
Ray Johnson
Vickie Johnson
C.E. Knudtsen and G.R. Cofield
Jeffrey Marfice
Troy and Eileen Matthews
Marge Murphy
Madelyn Sapp
Faye and Kootenai Seagraves
Dick Schmidt
Gene Soper
Donald Stowe
Ivanka Suveg
Josef Suveg
Brandon Wisdom

IN HONOR OF

Christy Davids
Bill Netzlof
Warren T. and Mildred Shepperd
Tony Stewart
NIC President Nick Swayne

Donor Spotlight – Galen and Miyoung Schuler

Miyoung and Galen Schuler share a dedication to advocacy and service. It has been a guiding principle throughout their lives, shaping their careers and personal endeavors. Miyoung is a passionate and skilled ER Nurse at St. Luke's Hospital in Boise. Galen retired in 2025 after two decades as General Counsel for Green Diamond Resource Company, a private forest management company.

Despite facing various challenges in their educational and professional journeys, Galen and Miyoung successfully navigated cultural expectations and difficult choices that ultimately enabled them to embrace their true callings.

Galen began his journey on a pre-med track at North Idaho College, before transferring to Boise State University. After careful consideration and many science classes, he ultimately decided his interests lay in political science. He graduated from BSU in '85, completed his master's degree, and then attended the University of Washington for his Juris Doctor degree, where he met Miyoung in the early nineties. They both graduated with law degrees and felt it was time to determine their next steps. After they evaluated their aspirations, Galen decided to leave academia and his PhD program to join a law firm specializing in natural resources, which led him to Green Diamond. Together, they started their family and had three wonderful boys. Miyoung later returned to school to pursue a new, fulfilling career in nursing. She graduated as an RN from Olympic College, a community college in Bremerton, Washington.

Miyoung fondly remembers her time at community college, appreciating the quality of instruction she received.

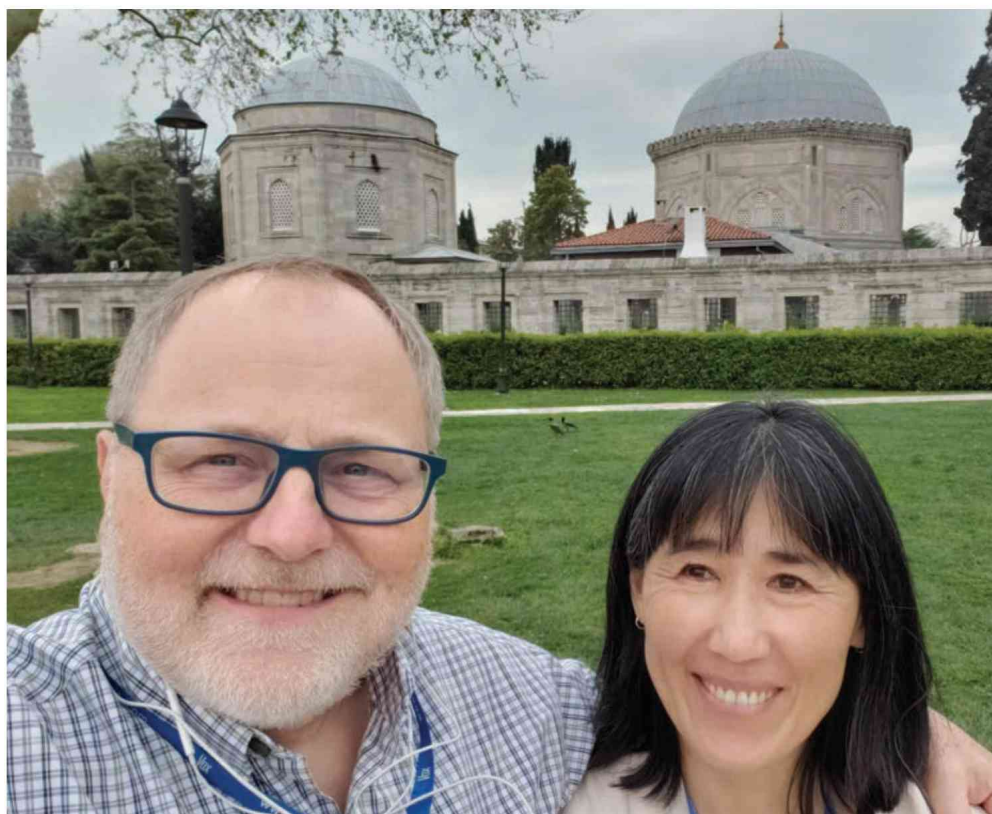
Galen shares a special bond with his community college, NIC. His father, Barry Schuler, served as NIC President from 1968 to 1986 – a transformative period in the college's history. Ruth, Galen's mother, also invested in education as a third-grade teacher in Coeur d'Alene. For 18 years, Ruth and Barry devoted their lives to the college and the North Idaho community.

In 2022, Galen and Miyoung established the Barry G. and Ruth J. Schuler Memorial Scholarship. As they seek to carry on their family's remarkable legacy of empowering others towards personal growth and success, they hope their financial contributions help support those who may need a helping hand to discover their path in life.

Reflecting on their experiences, both recognize the significant role their educational and professional milestones played in their family's journey. They strive to be an example of growth and authenticity for their children and, through their giving, aspire to make a meaningful impact in the lives of students who are just like they once were.

"North Idaho has become a global destination for people who have tasted success," they say. "It is important to secure opportunities for students there who are just beginning to envision and pursue their own success."

Make a contribution in support of educational excellence and student success today! Use the enclosed envelope or contact the NIC Foundation office at (208) 769-5978. Gifts can also be made securely online at nic.edu/give.





A Legacy for Education – Eric and Rita Kilbey

Eric and Rita Kilbey recently toured the North Idaho College Parker Technical Education Center, a place where their legacy gift will leave a lasting impact. Their generous support will benefit students in Trades and Industry programs for generations to come, in the very fields that hold deep personal significance to both Eric and Rita.

Eric, a seasoned mechanic whose career began at a General Motors dealership in England, was especially impressed with the facility. After decades of dedicated service, including military tank repair during World War II and heavy machine repair work across England, Canada, and the United States, his praise carried weight. With admiration and quiet but excited observation, he remarked, “You do good work here!”

Eric was born in Yorkshire, England in 1930, and Rita was born in Northumberland, England in 1932. They married in 1954, embarking on a lifetime journey together that led them first to Canada and then to the United States. Eric worked for many car dealerships as a mechanic, and in a variety of agricultural and maintenance shops to service heavy equipment. Rita worked on ranches and alongside Eric, and they both retired in 1988.

The Kilbey’s visit to the NIC Parker Technical Education Center was more than ceremonial, it underscored the impact of their generous legacy gift. Their legacy will live on through the students who walk through the doors to learn a trade and build a future. It is a gift resulting from years of craftsmanship and care for community.

For more information on how you can leave your legacy in support of educational excellence and student success, contact the NIC Foundation at (208) 769-5978. Explore our free planning resources at nic.planmylegacy.org.

Educational Excellence – Enhancing Resources for Student Success

Charitable contributions provide the resources for the NIC Foundation Grant Program, which strives to foster innovation and creativity to further enhance educational excellence. Each year, the NIC Foundation makes funds available to North Idaho College staff, faculty, and student groups through a competitive application process.

One recent grant award benefited students learning microscopy, a crucial component in natural science and health professions coursework. Since microscopes are operated by one person at a time, sharing or discussing images to achieve course objectives can be challenging, especially for those with vision impairment. The grant award was used to equip two microscopes with digital cameras that wirelessly stream images to standalone monitors and other devices. This remarkable technology enables students to refine their microscopy skills, share their findings with other observers, engage in cooperative group discussion about their work, and elevate their educational experience with a sense of camaraderie and confidence.



Patty Maloney, Meyer Health and Sciences Center Coordinator, works with student Meegan to properly focus a microscope image being streamed to a television via the new camera attachments.

Since the program's inception, the NIC Foundation has provided over \$1.6 million and awarded 402 grants through the NIC Foundation Grant Program.

Make a contribution in support of educational excellence and student success today! Use the enclosed envelope or contact the NIC Foundation office at (208) 769-5978. Gifts can also be made securely online at nic.edu/give.

LEGACY SOCIETY

A special thanks to the following supporters for designating the North Idaho College Foundation as a beneficiary of their will, trust, retirement account, or life insurance policy.

Anonymous	William and Barbara Egolf	Charles Lange	Robert Scates
Betty Ableman	Don and Joyce Ferrell	Ann Lebsack	Steven Schenk and Gretchen Berning
Rayelle and Mike Anderson	Thelma Finney	Fritz and Lucie Maier	Charles and Eileen Seymour
Kit Scates Barnhart	Paul and Sherry Fisher	Nell Malanya	Norman and Nanci Shaman
Duncan and Sherry Bell	Lynn and Ellen Fredrikson	Claire McDonald	Shelley Shannon
Heinie and Rose Bell	Jean Gardner	Mary Anderson McGovern	Elizabeth and Joseph Simon
J. Douglas and Jan Bell	John and Terri Goedde	Victoria Mitten-Kaleff	H. C. Slamberg
Dean and Linda Bennett	Dean and Cindy Haagenson	Molstead Family	Tony Stewart
Janet Benoit	Doug Halliday	Doris Moorehead	Charles Best and Joanne Sutton-Best
Edward and Mary Bobby	Jack Hamilton	Frank Morbeck	Donald and LaVerne Taylor
Emmett and Annah Booher	John and Sadie Harrison	W. Brant Morris	Sue and Tom Thilo
Earlene Joyce Chilcott Boswell	Leona Hassen	Jere and Julie Mossier	Margaret Thrailkill
Carla Buck and Jens Hansen	Jennifer Henage	Robert and Nancey Murray	Grace Tyson
George and Dorothy Carlson	Barbara Henderson	Ronald and Pamela Noah	Emma Van Laken
Tim and Kathy Christie	Merle and Gladys Henkel	Tony and Martha Norton	Larry Wages
Pat and Shannon Clevenger	Arthur Hess	Earl and Eva Ogg	A. K. and Ellen Walden
Celia Cook	Matt Higgins	J. Grant and Dixie Person	Dick and Shirlee Wandrocke
Cherie Cook	Ford Hoback	John Pointner	Bonnie Warwick
Doug Cresswell	Richard Howell	Edith Polston	Tom and Irene Wilson
Thomas and Alice Cromwell	Stephen and Janice Johnson	Rebecca Powers	Joachim and Sandra Wirth
Lester and Judith Nations Crow	Carol A. Jones	Edith Marie Reed	Ken and Virginia Wright
Tim and Eileen Crowder	Rolly and Jeannie Jurgens	Ben and Anna Marie Rolphe	Brian and Reney Zeranski
Jim and Carol Crowe	Richard and Jill Jurvelin	Nils and Mary Rosdahl	
Linda and Jim Duffield	Marion Keating	Dick and Wendy Sams	
Loretta Dunnigan	Eric and Rita Kilbey	Don and Sue Sausser	

If you have included the North Idaho College Foundation in your estate plan, please notify the NIC Foundation so your commitment is properly honored.

NIC Foundation Scholarships and Funds

The following funds have been established to benefit deserving students and specific areas of need. The criteria of each varies. To name a fund for your social organization, business, or family, or in honor or in memory of a loved one, contact the NIC Foundation at (208) 769-5978 or email foundation@nicfoundation.org.

ENDOWMENTS

Betty Ableman Memorial
ACG Collision Repair
John and Joanna Adams
Wally and Pamela Adams
Adams – Whitley
Advanced Benefits
Rayelle and Michael Anderson
Antonelli Botany
Associated Students of North Idaho College (ASNIC)
James and Christine Barton
Bauer Tamasky
BDK/AKV
Camille Colstad Beebe, R.N. Memorial
Heinie and Rose Bell Memorial
J. Douglas and Jan Bell Memorial
Priscilla Bell
Ben Franklin Young Entrepreneurs
C. Robert and Donna Bennett Memorial
Janet Benoit Memorial
Mr. and Mrs. Erwin Berning Memorial
Beta Sigma Phi
Beyers-Newby Veterans
Edward and Mary Bobby Memorial
Bonner County Resident
Emmett and Annah Booher Memorial
Earlene Joyce Chilcott Boswell Memorial
H.W. Branson Memorial
Joan Brogan Memorial
R. Romer and Kathleen Brown
Carla M. Buck and Jens Hansen Memorial
Building the Future
Building the Future Equipment
Donald and Nancy Burk
Michael and Deborah Burke
Walter J. Burns, Sr. Memorial
Callahan Zeller Foundation, Inc.
George and Dorothy Carlson Memorial
Elma Cerny Memorial
Che'nshish
Mary Christie Memorial
Tim and Kathleen Christie
Kenneth G. Clark Memorial
Jesse and June Clay Memorial
Coeur d'Alene Garden Club
Coeur d'Alene Mines
Coeur d'Alene Symphony Orchestra
Dick and Janette Compton
Celia Cook Memorial
Thomas and Alice Cromwell Memorial
Lester and Judith Nations Crow Memorial
Timothy and Eileen Crowder
Carolyn and James Crowe Memorial
Crown Pacific
Todd Crum Memorial
Harold and Katherine Damiano
Frank Darlington
Frank Darlington CTE
Robert and Leona DeArmond Memorial
John Dunlop Memorial
Loretta Dunnigan Memorial
Robert A. Ebert, DDS Memorial
Anna R. Edminster Memorial
Bill Eisenwinter Memorial
Tom and Alma Emerson Memorial
Don and Joyce Ferrell
Thelma Finney Memorial
Bonnie and Lee Fossum Memorial
Lynn and Ellen Fredrikson Memorial
Cleve and Addie Gaine Memorial
Steve Gannon Memorial
George Frederick Jewett Foundation Nursing
Gerber Family
Mary Granier Family

Dean and Cindy Haagenon
Haft Family
Scott Hague Memorial
Jack J. Hamilton Memorial
John and Sadie Harrison Memorial
Leona Hassen Memorial
Wes and Meg Hatch Memorial
Health and Sciences
Jennifer Henage Memorial
Merle and Gladys Henkel/Cherie Cook Memorial
Hennon, Gschwend and Jones Memorial
Jacque Herum Memorial
Ford S. Hoback Memorial
Jack Holm Memorial
Harry and Ann Holmberg
Kathryn Hoon Memorial
Charles K. Howard Memorial
Richard W. Howell Memorial
Tom Huson Memorial
CR and PJ Imus Vocational Skills
INC/Morris Family
Owen F. and Gladys Richardson Jacklin Jerde Family
Rod Jessick Memorial
Ray and Vickie Johnson Memorial
Stephen and Janice Johnson
Joe Jonas Memorial
Janice Helbling Jones Memorial
Rolly and Jeannie Jurgens
George Kildow Memorial
Darlene King Memorial
C.E. Knudtsen and G.R. Cofield Memorial
Ken Kohli Family
Kootenai Medical Center Laboratory
Joe Kovolyan Memorial
Karl Krueger
Joan Leahy Memorial
Anne and Ray Lebsack Memorial
Roland and Doris LeCoutre Memorial
Howard K. Low Memorial
Angela Mia Maiani Memorial
David J. Maiani Memorial
Fritz and Lucie Maier Memorial
Nell Malanya Memorial
Jeffrey Marfice Memorial
Alan R. Markizon Memorial
Marquardt Family Memorial
Clyde McCaw
Claire F. McDonald Memorial
Mary Anderson McGovern Memorial
Charles "Mac" and Betty McLain Memorial
Merritt Brothers Lumber Company
Meyer Equipment and Technology
Michael and Barbara Miller
Molstead Family Memorial
Marilyn Montgomery and Dr. Ernest Fokes
Sergeant Greg Moore Memorial
Doris Puckett Moorehead Memorial
Frank A. Morbeck Memorial
Morgan Children's Center Fund
Arthur and Eileen Needham Memorial
Mark Nelson Memorial
NightHawk Radiology Services
NIC Communication Department
NIC Diamond Jubilee
NIC Employees' Providing Opportunities
NIC Foundation Investing in Dreams
NIC Library
NIC Retirees Scholarship for Students
North Idaho Building Contractors Association
North Idaho Classic Car Club
North Idaho Code Enforcers
North Idaho Veterans Stand Down

Tony and Martha Norton Memorial
Earl and Eva Ogg Memorial
Daniel and Kathryn Pinkerton
John C. Pointner Memorial
John W. and Rebecca Powers
Professor Molennium, Milli and Nan O. Mole
Providing Opportunities/Fulfilling Dreams
Joan I. Pyle-Wilson Memorial
Pythian Sisters Woodbine Temple #13
Ramsden & Lyons
Warren and Ethel Ratcliff Memorial
Edith Marie Reed Memorial
James and Laura Rice Family
Sheila Richards
Gregg R. Richman Memorial
Riverstone Development
Rotary Clubs of North Idaho
Steve and Karen Ruppel CTE
Madelyn Isabella Sapp Memorial
Don and Sue Sausser Memorial
Robert Scates Memorial
Mr. and Mrs. George S. Schenk Memorial
Steven W. Schenk
Steven Walther Schenk and Gretchen Berning
Manuel and Gladys Schneidmiller Memorial
Barry G. and Ruth J. Schuler Memorial
Eileen G. Seymour Memorial
Nanci R. Shaman Memorial
Shannon Family Memorial
Shoshone County Community
Shoshone Head Start
Barry J. Simon Award in Engineering & Science
H.C. Slamberg Memorial
Hugh Olin Smith Memorial
Eugene R. Soper Memorial
Spirit Lake Volunteer Ambulance
Lanny and Marlene Stein
Tony Stewart
Stimson Lumber Company
Ray Stone Memorial
Karen and Charles Streeter Memorial
Students with Disabilities
Sunshine Mining Company
Charles and Joanne Sutton
Donald and LaVerne Taylor Memorial
Tedmon Family
Rose and Craig Tedmon
Wendy Lee Tedmon Music
Thilo Health and Sciences
Jim and Brenda Thorpe
Grace Tyson Memorial
Emma VanLaken Memorial
Raymond Vaudreuil Sr. Memorial
Gailen Veurink Memorial
Peter and Allie Vogt Nursing
A.K. and Ellen Walden Memorial
Scott Wemple Memorial
Wilharm Family
Williams Family
Brian Williams Memorial
Captain Chris "Boomer" Wilson
Tom and Irene Wilson Memorial
Windermere/Coeur d'Alene Realty Foundation
Brandon Wisdom Memorial
Kenneth and Virginia Wright
Michael Wyatt Memorial
Gilbert and Eileen Yates Memorial
Richard H. Young Memorial

ANNUAL FUNDS

Adult Education/GED
American Association of University Women

Association of Government Accountants
Avista Scholars Program
Bi-Mart
Steve Button Memorial
City of Stateline
Nell Louise Clingerman
Coeur d'Alene Art Association
Coeur d'Alene Kiwanis Club
Laura Moore Cunningham Foundation
DAV 9 Fort Sherman
Robert and Leona DeArmond Opportunity
Calvin DeHaas Memorial
Delta Dental of Idaho
Designing Your NIC Experience
El Min West/United Methodist
Ron and Sandy Emerson
Entrepreneurship and Innovation
Evans-Frank
Family Learning Organization
Travis Shane Farley Memorial
Gene Haas
Hayden Lake Country Club
Anna Holmberg
Richard L. Hyneman Memorial
Idaho Education Access Fund
Idaho Forest Group
Terry ML Jones Performance
Warren "Squirt" and Marion Keating Memorial
Kootenai Charities, Inc.
Kootenai County Task Force on Human Relations
Nep and Mary Ellen Lynch CTE
Jeffrey Marfice Memorial
Wayne Meyer NIC Dual Credit
Robert D. Murray Award
Murray Family
NIC Alumni Association
NIC American Indian Studies Program
NIC Child Development Program
NIC Culinary Arts
NIC Dental Hygiene Program
NIC Foundation Minority Student
NIC Graphic Design
NIC Mental Health Assistant Program
NIC Student Nurses Association
NIC Teaching and Learning Center
Norco, Inc.
North Idaho Women and Their Money
PEO Chapter AG
George and Loretta Reeve Memorial
Chris Reynolds Memorial
Silver Valley Economic Development NIC Dual Credit
Ivanka A. Suveg Memorial
Lou and Margaret Thraikill Academic Work
Virtual Possibilities Network
Chuck Williams

GREATEST NEEDS ENDOWMENTS

Rayelle and Michael Anderson
Kit Scates Barnhart Memorial
Priscilla Bell
Gregory C. Carr
Coleman Family
Fortus Realty/Denise Lundy
Jean Gardner Memorial
Jacquot Family
Edith Polston Memorial
Dick and Wendy Sams Memorial
Maxine and Donald Schierman Family
Camille Waltermire Memorial
Mary Jean Young Memorial



Students are at the heart of the North Idaho College Foundation's mission.

As the NIC Foundation approaches its 50th anniversary in 2027, our dedication and commitment to funding scholarships for students is stronger than ever. We have seen the tremendous impact in the lives of students as they forge their future through education and training.

Time and again, students have told us that without the financial support of scholarships, they would not be able to afford higher education. They have also shared the powerful encouragement that comes from knowing that others believe in them. Coupled together, this support creates an opportunity for students to build a bright future for themselves and their families.

Through contributions and prudent stewardship, the NIC Foundation is proud to provide over 1,000 scholarships to deserving students each year.

However, we know the need is greater. Not every eligible student receives a scholarship. The rising cost of living is a challenge for students who are working hard every day to make ends meet. Some students choose to forgo their education because they simply cannot afford it.

To meet this growing need, the NIC Foundation's goal is to increase scholarship funding by \$500,000 each year.

Partner with us by Investing in Dreams!

With your investment, we will create opportunities for students, our college, and ultimately, our community.

Please join us in these efforts. Contributions of any size make a huge impact! Your financial investment will help us reach even more students, change more lives, and fuel more futures.

Make a contribution in support of educational excellence and student success today! Use the enclosed envelope or contact the NIC Foundation office at (208) 769-5978. Gifts can also be made securely online at nic.edu/give.

————— Contact us at foundation@nicfoundation.org or (208) 769-5978. —————



This year marked the 32nd consecutive year of an early ticket sellout for North Idaho College

Foundation's 32nd annual Really BIG Raffle fundraiser. Over \$562,000 in prizes were given away on July 9, 2025, to the lucky winners. Steven "Kyle" Hephner was the winner of the Grand Prize new home in Post Falls with ticket #3484. The Really BIG Raffle will be back again on July 8, 2026, with another life-changing opportunity to win a new home and other amazing prizes. Proceeds of the raffle support student success and educational excellence.

Visit nic.edu/rbr or call (208) 769-3271 for more information about the Really BIG Raffle.